



Hugo

Hugh Green was born in Raphoe in County Donegal in 1931. Growing up in a family of eight children in a small town in rural Ireland there were no luxuries, but Hugh enjoyed his childhood in the close-knit Raphoe community.

In 2018, the Hugo Charitable Trust team, along with family and friends, travelled to Ireland to reconnect with Hugh's beloved County Donegal.



Our Founder

Maryanne Green is the eldest daughter of Hugh Green and worked closely by his side for over 25 years.

Like Hugh, Maryanne left school with few formal qualifications. However, Hugh saw the qualities and potential that would lead to Maryanne working closely by her father's side for over 25 years. During this time, she would progress from managing his farming office, Kilmacrennan Livestock, through to being the Chief Executive of the Green & McCahill Group and later the Hugh Green Group before retiring in 2012.

In 1998 Hugh and Maryanne established the Hugh Green Charitable Trust later to be renamed the Hugh Green Foundation. During the 13 years she spent as a founding trustee of the Hugh Green Charitable Trust, Maryanne made many contacts in the philanthropic community and developed a passion for what her dad would call "lending a helping hand – a hand up not a hand out".

In 2011 Maryanne stepped aside from the Hugh Green Foundation but was delighted to reestablish her love of philanthropy when she founded the Hugo Charitable Trust in May 2017. Since Hugo was established Maryanne has been overwhelmed by the response she has received from the philanthropic community both in New Zealand and in Ireland.



A Word From Our Chair

Haere mai, céad míle fáilte and welcome to the Hugo Charitable Trust

The Hugo Charitable Trust was established by Maryanne Green on 1 June 2017 with capital of \$75 million to continue the philanthropic legacy of her father Hugh Green. Since then Hugo has donated just over \$6.5 million to 190 great charities and causes. Because all of our overheads have been met by the Hugh Green Family Trust, of which Maryanne, Alice and I are the trustees, we have been able to do this while preserving all of our capital base to fund future years.

We have made large donations to established organisations such as the University of Auckland, Gillies McIndoe Research Institute, and Auckland City Mission. Importantly, we have also been able to have a big impact on many smaller charities. We don't do this by waiting in the office for applications to come in. Our donations team actively get out in the community and search out organisations that fly under the radar. This has led to donations to wonderful charities such as Kākano Youth Arts Collective, RainbowYOUTH and a great many others.

Our charitable purposes are wide-ranging. They include medical research, education, help to those with physical or mental health care needs, and support for social programmes. For example, Hugo partnered with Orange Sky to fund New Zealand's first mobile laundry service for the homeless. In addition to awarding education scholarships to five young people, Hugo sponsored three Dilworth School leavers to be tutors at the Royal School of Dungannon in Ireland where they will help strengthen the ties between the two countries our patron Hugh Green loved so much. On top of that thousands of young people are being supported through our donations to charities like Sistema Aotearoa, Kootuitui ki Papakura Trust, Teach First NZ, Graeme Dingle Foundation and Sir Peter Blake Trust.

We are also very committed to supporting our communities in times of crisis. The terrible attacks on two mosques in Christchurch on 15 March 2019 was such a time. To express our heartfelt sympathy and solidarity with those affected, particularly the New Zealand Muslim community, we made an immediate donation of \$100,000 to two organisations who will be providing financial assistance to the victims and their families.

From the Trustees and the team at the Hugo Charitable Trust we hope you enjoy reading more about our trust. We welcome any suggestions or referrals that you might like to make.

Mark Owens
CHAIRMAN

Our People



Mark Owens, Chairman



Bruce Stewart QC, Trustee



Kathryn Roberts, Trustee



Stephen Hunter, Trustee



Kerry Ludlam, Chief Financial Officer



Julia Hunter, Donations Manager



Aoibheann Monaghan, Donations Officer



Kerry D Ludlam, Accounts Administrator



Alice Watson, Hugh's granddaughter

Out and About



Julia visiting Little Angels School, Letterkenny

2018-2019 Highlights

143 Charities

Supported by the Hugo
Charitable Trust

\$994,287

Donated to medical
research and
medical care

\$250,000

Given to 68 charities
nominated by 80
Hugo Friends

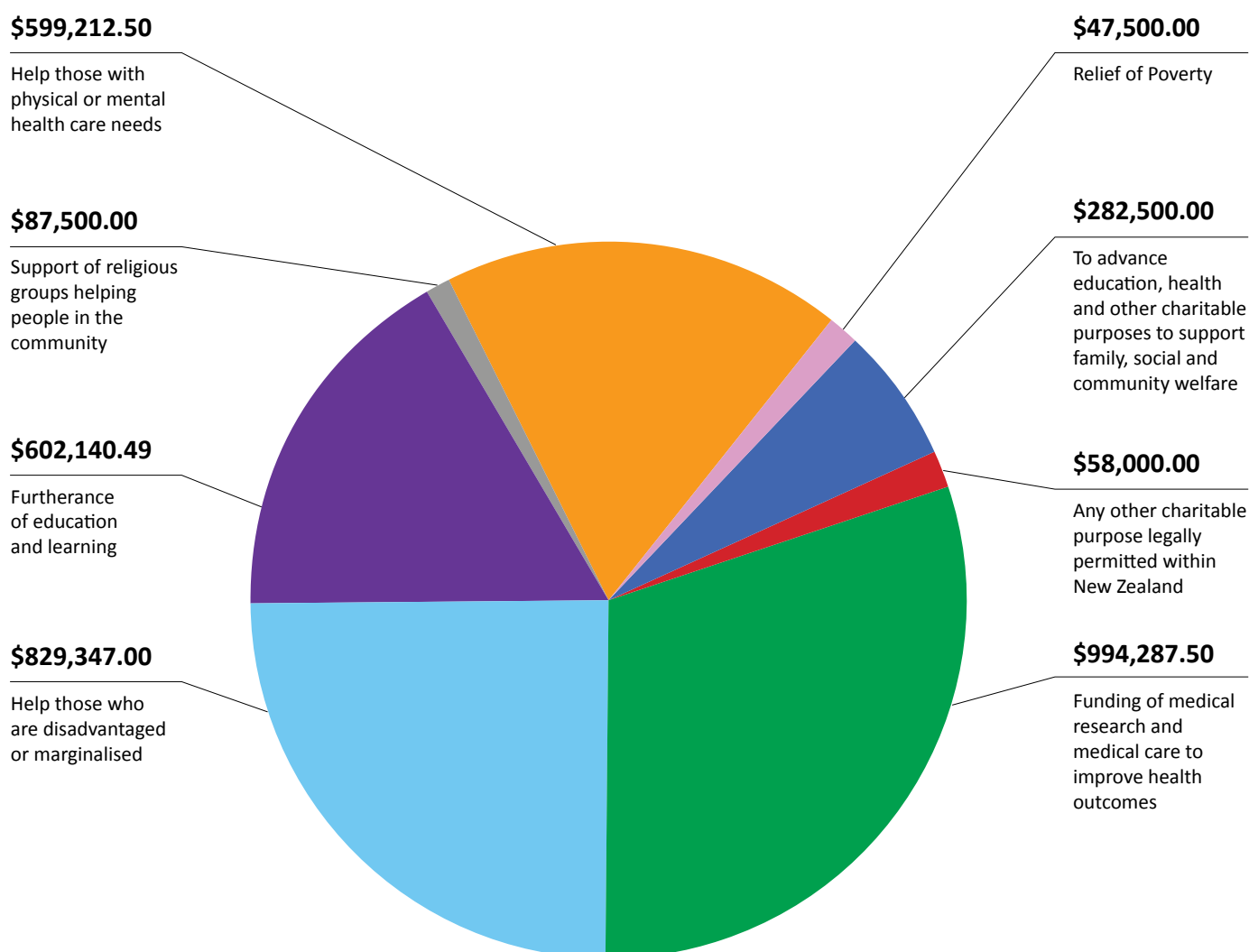
\$3,500,487

In total donated
for the benefit of
New Zealanders



2018-2019

Donations by Charitable Purpose



All Hugo's costs and overheads for 2018-2019 were covered by Maryanne Green and Alice Watson from distributions from the Hugh Green Family Trust of which the trustees are Maryanne Green, Alice Watson and Mark Owens.

2017-2018:	\$3,007,125.49
2018-2019:	\$3,500,487.49
DONATION TOTAL:	\$6,507,612.98

We have had another great year donating to worthy charities that meet our charitable purposes:

Rising Stars

Sacred Heart College, Glen Innes
Sistema Aotearoa, Ōtara, Auckland



Pictured from left to right: Alimaifiti (Ali) Ono and Esekia Taito.

With a donation of \$143,000, Hugo established two education scholarships to Sacred Heart College – a Catholic Marist College for boys in Glen Innes, Auckland. Hugo set up the scholarships with the help of Paul Greaney, Executive Chairman of Sacred Heart College's Development Foundation and Ros Giffney, former Programme Manager of Sistema Aotearoa (an orchestral music programme in Ōtara, South Auckland). The scholarships were awarded to two talented alumni from Sistema Aotearoa.

The two recipients of the Hugo Charitable Trust Scholarships awarded to Sistema Aotearoa are:

Esekia Taito - a very confident young cellist who joined the Sistema Aotearoa programme in 2011; and

Alimaifiti (Ali) Ono - another diligent cello player who has been part of the Sistema Aotearoa programme since 2014.

Esekia will attend Sacred Heart College as a Boarder from Year 9 until the end of Year 13. Alimaifiti will attend Sacred Heart College as a Day Student from Year 7 until the end of Year 13. Hugo wishes Esekia and Ali all the best for the start of their new adventure at Sacred Heart!

Thank you to Hugo friend David Lynch for connecting us with Sacred Heart College's Development Foundation. David is a Financial Advisor at JB Were.

Set For Success

Papakura High School, Auckland



Pictured from left to right: Kent Christensen, Youth Worker, Papakura High School; EK Taeiloa, Hugo scholarship recipient; Gina Le Noel, Hugo scholarship recipient; Kerry Ludlam, Hugo CFO.

On a visit to Papakura High School in 2017, the Hugo team and trustees met Year 13 students Eakalafi (EK) Taeiloa and Georgina (Gina) Le Noel. At the time, both students were members of Papakura High School's Student Youth Health Council. EK and Gina impressed Hugo with their involvement in their school community and the educational and career goals they had set for themselves. We hope Hugo's donation of a lap-top and \$2,500 each will help EK and Gina with their studies and achieve their goals. Well done EK and Gina!

Baradene Scholarship

Baradene College of the Sacred Heart, Auckland



We would like to thank Hugo friends (and good friends of the late Hugh Green) Peter and Maryanne Mahoney who connected us to Baradene College of the Sacred Heart in Auckland to help Hugo establish an education scholarship. Maryanne Mahoney is a Director of Baradene College Limited and a Trustee of the Baradene College 'Growing Heart' Foundation.



Hugo's scholarship to Baradene College of \$50,000 was awarded to Carolyn Fangupo (pictured above) to cover her schooling at Baradene from Years 7-13. Congratulations Carolyn!

"Baradene is just so grateful for the generous donation we have received from the Hugo Charitable Trust for a scholarship to support one of our girls throughout her College education. Your philanthropic gesture will undoubtedly change the course of this young girl's life and set her on the path for her future success. We met with the family this week and they were just so amazed to be receiving such welcome and necessary support. Many thanks." Sandy Pasley, Principal.

New Wheels

InZone Education Foundation, Epsom, Auckland



InZone Education Foundation is a charity that aims to enhance the educational outcomes of Māori and Pacific youth. The Foundation does this by providing hostels which are "InZone" for two high performing schools in Auckland – Auckland Boys Grammar School and Epsom Girls Grammar School. InZone partners with those schools and supports students staying in their hostels to *"take their place in the cultural, economic, and civic leadership of Aotearoa New Zealand"*.



Hugo's donation of \$50,747 has enabled InZone to purchase a new van to transport students to events, cultural and sporting activities. We are grateful to Hugo friend, Noel Ingram QC (pictured above with Maryanne), for introducing us to InZone.

New Sports Uniforms

Panmure Bridge School, Auckland



Odie Johnson introduced us to Panmure Bridge School in Auckland where she works as a Te Reo Māori teacher. Panmure Bridge is part of the Manaiaakalani Community of Learning.



Hugo's donation of \$5,000 has gone towards new sports uniforms for students (pictured above). The school has increased its participation in sport, achieving exceptionally good results across the board at inter-school events. Grant Ogilvie, the Sports Co-Ordinator at Panmure Bridge School, explained that the students *"will have an even bigger sense of pride in their right uniform"*. We agree Grant – the students look amazing in their new sports uniforms.

Panmure Bridge school also hope to use part of the donation towards the 'Flying Fives' programme which is a developmental language programme being rolled out for five-year olds who are just commencing their first year at school.

Rosmini College Fundraiser

Rosmini College, North Shore, Auckland

Hugo Friend, Oliver Lee (pictured below with Maryanne Green), organised a very successful Golf Tournament fundraiser and auction for Rosmini College in November 2018. Oliver's great efforts raised almost \$45,000. Hugo donated \$2,000 to contribute to the funds raised along with a five-night stay at the Hugo House and the use of the Hugo Van. We hope the winners of the auction enjoyed their stay at Hugo House in Arrowtown!



Dance and Arts Therapy

Dance Therapy NZ, Nationwide

The goal of this charity is to support and empower individuals and groups in Aotearoa New Zealand through the use of dance movement and arts therapies, with a focus on those with disabilities, special needs, and at-risk/low income communities. Hugo's donation of \$10,000 will go towards the development of Dance Therapy NZ's Christchurch programmes.

Hugo would like to thank Dr Tim Rich, Specialist Periodontist, for this referral.



Kiwi Kids Certainly Can!

Graeme Dingle Foundation, Nationwide



The Graeme Dingle Foundation wants to help transform young lives and believes that all young people can be confident contributors to New Zealand. One of the Foundation's programmes – Kiwi Can – is delivered in primary and intermediate schools and supports the Ministry of Education's Positive Behaviour for Learning initiative.

Lessons delivered by Kiwi Can leaders focus on developing greater communication skills, social interaction, co-operation, kindness and caring in students. The Hugo team witnessed the students practising these important skills on two separate occasions. We were impressed with the Kiwi Can leaders' positive role-modelling and the techniques they used to promote good decision-making amongst the students.

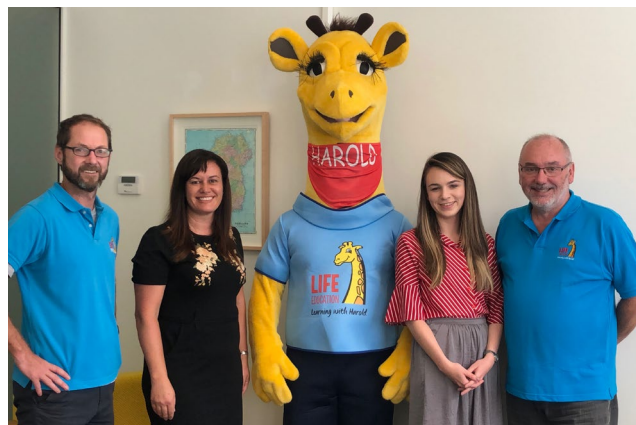


Hugo's donation of \$50,000 will help support the delivery of the Graeme Dingle Foundation's Kiwi Can programme for two years in both Pukekohe North School in Auckland's Franklin district and Mercer School in the Waikato district.

Pukekohe North School caters for Years 1 to 8 and has a role of 200 Māori and Pacific children. Mercer School is a rural primary school catering for students in Years 1 to 8.

Giving Harold A Hand

Life Education Trust, Rodney District



Life Education Trust is a nation-wide run charity that was established in New Zealand 30 years ago. The friendly face of their mascot – Harold the Giraffe – resonates joy and familiarity with New Zealanders who have experienced the impact of this programme. Life Education's fresh and relevant approach to teaching important messages engages children of all ages and encourages them to voice their opinions.

The programme's focus is interactive learning for children around healthy life choices (nutrition, human body and harmful substances).

6,000 students in primary and intermediate schools in the Rodney district benefited from the programme in 2018. Hugo's donation of \$20,000 will help Life Education Rodney continue to reach as many children in the Rodney district as possible.

More Mentors for Vulnerable Kids

Pillars, Nationwide



Pillars has been supporting vulnerable children of prisoners and their families for the last 30 years. Through its mentoring and wrap-around support programme, Pillars works with whānau and children to help bring stability into the family and encourage a positive future. Pillars believes this type of support is crucial to help break the cycle of crime and strengthen our communities.

In May last year the New Zealand Government gifted \$5,000 to Pillars, in lieu of a wedding gift to the Duke and Duchess of Sussex, due to the couple's interest in programmes that support vulnerable children. The Duke and Duchess of Sussex then paid a visit to Pillars when they toured New Zealand in October 2018.



Pictured above: Alexis Masiu received a Pillars Award from the Duchess of Sussex for her commitment and achievements in music.

Pillars' mentoring programme provides one-on-one mentors who sign up for a minimum of 12 months involvement. Hugo's donations of \$54,000 will provide mentoring support to 18 children on Pillars' waiting list in Auckland and Christchurch.

We would like to thank Ross (from KPMG), Janice and Holly McKinley for introducing us to Pillars and for the insight Holly provided on her experience as a mentor for Pillars in South Auckland.

Pillars would love to hear from people interested in becoming a mentor in Auckland or Christchurch. Pillars train and support their volunteer mentors and all children on the programme have a family support worker involved in their family.

A Helping Hand

Hand Up Foundation, Auckland

Since 2008 the Hand Up Foundation has partnered with selected schools in Auckland to financially support talented, but financially disadvantaged, young sports people. A Hugo donation of \$3,000 will provide scholarships to two Year 12/13 students at St Paul's College in central Auckland to help the students achieve their goals in their chosen sports.



Pictured above: Sione Moala and Navarone Vaka, St Paul's College.

Thanks to Tony Abraham from Pearl Fisher Capital who kindly introduced Hugo to the Hand Up Foundation.

School Van Upgrade

Mount Richmond School, Ōtāhuhu, South Auckland

Mount Richmond School provides education for children with a range of intellectual, physical and other disabilities. The Hugo donation of \$66,000 has made it possible for the school to purchase a Toyota Hiace Van with a rear wheelchair hoist.



"Words cannot start to express our gratitude for your most generous donation which will enable us to purchase a school van with a hoist. We currently have 12 students who are in wheelchairs, and their opportunities to take part in experiences outside of school and to interact with the community have been limited, especially recently when our old hoist van has required maintenance beyond its lifespan and our affordability." Margaret Quinn, Mount Richmond School



Who Did You Help Today?

Who Did You Help Today Charitable Trust (WDYHT), Nationwide

We have been very impressed with the growth in WDYHT's projects since we wrote about the Trust in our Annual Report last year. In a recent report, the trustees of WDYHT updated Hugo on the

charity's three projects that support connecting our communities to create positive change: *"From assisting more than 420 children with their reading in low decile primary schools, to seeking to facilitate relationships for nearly 500 imprisoned mothers with their children, to matching at least 180 not-for-profit projects with skilled volunteers, more New Zealanders are finding it easier to help others, thanks to Who Did You Help Today."*



Hugo has donated a further \$50,000 to help WDYHT continue its great work with the Mothers Project and Homework Help Club.

We would like to congratulate WDYHT for being recognised in the 2019 Kiwibank New Zealander of the Year awards in the 'Community of the Year' category.



Pictured above: Julia and Aoibheann with Mothers Project volunteers and WDYHT founder, Stacey Shortall (far right).

A Sporting Chance

John Walker Find Your Field of Dreams Foundation,
South Auckland



This charity aims to positively impact the lives of young people in Auckland's areas of greatest need by providing them with opportunities to live healthy, active lifestyles and pursue a positive pathway through sport and physical recreation.



Hugo's donation of \$25,000 will support one of the Foundation's programmes - BLENNZ Sport. BLENNZ Sport offers outside of the classroom opportunities to students who attend the Homai Campus of Blind and Low Vision Education Network New Zealand in South Auckland. These opportunities include NZ Blind Cricket Events, Beach Day, Halberg Events, Special Olympics and Have A Go Days.

The goal of the BLENNZ sport programme is to enable the students to participate with even more confidence in everyday activities and to improve their physical abilities.

Go Wheelington!

Parafed Wellington (now known as 'dsport')



Parafed Wellington's goal is to provide and facilitate sporting, recreation or leisure opportunities for their members who have a physical disability. Hugo's \$15,000 donation will go towards Parafed Wellington's Youth Group programme for members aged 5-18 years old.



Camp Quality

Camp Quality New Zealand, Nationwide



Camp Quality has a very important mission to bring fun, hope and happiness to children living with cancer. For over 30 years, Camp Quality has been running annual camps and recreational activities for children aged 5 to 16 years living with cancer across New Zealand. Each year, this charitable trust recruits and trains over 500 companions – one-on-one buddies for each of their campers. Companions attend camp and are with campers 24/7 to ensure that they are “safe, sorted and smiling”.

Hugo’s donation of \$20,000 supported training (regional training of companions and volunteers, health and safety, and a national treasurers forum) and raising awareness (10,000 new brochures were printed and distributed to the regions).



Growing Leaders for Change

Teach First NZ – Ako Mātātupu, Nationwide

As Teach First NZ points out, Aotearoa ranks 33rd (out of 38 countries) in the OECD for levels of educational inequality. Our system is four times as likely to fail students from low income communities. Teach First NZ aims to disrupt this inequity by attracting more great people into the education sector who are committed to making a difference for our young people.



Teach First NZ recruits, trains and places outstanding individuals, who have completed a minimum of a Bachelor’s Degree, in schools in low-income communities around NZ. Teach First NZ then continues to co-ordinate and provide them with leadership training. While teaching 60% of a full-time teaching load, participants work towards a Master of Teaching and Education Leadership over two years, which is delivered in partnership by Teach First NZ and The Mind Lab.

Hugo’s donation of \$50,000 will cover the costs of two participants in the Teach First NZ programme and will also support Teach First NZ’s work with its alumni.



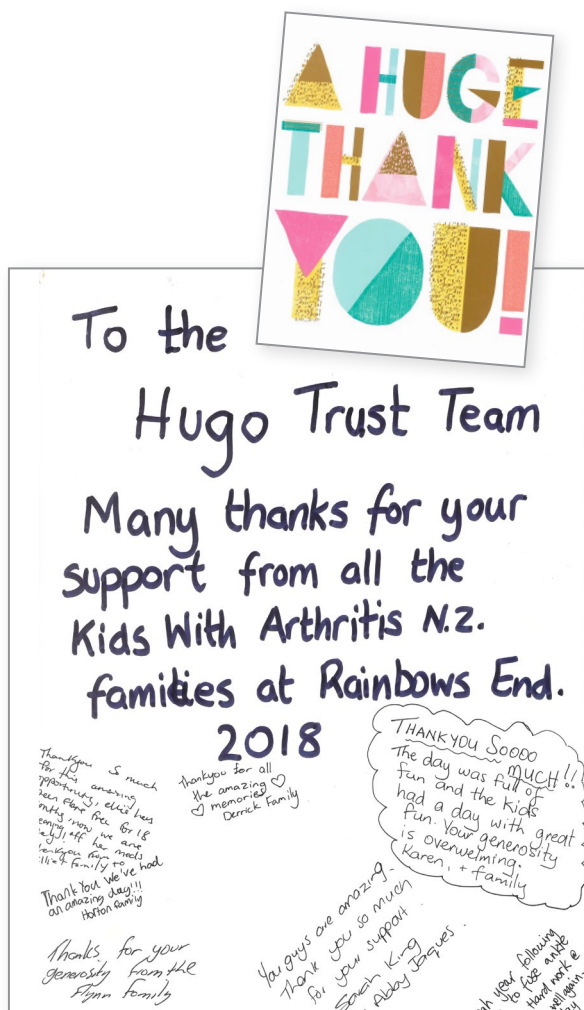
Christmas Spirit

Kids With Arthritis NZ, Nationwide



Kids With Arthritis was a favourite of Hugh's and so Hugo is delighted to continue the relationship by supporting the brilliant work of this charity.

Hugo's \$10,000 donation funded the Kids With Arthritis 2018 Christmas events in Auckland, Wellington and Christchurch.



Health Stars

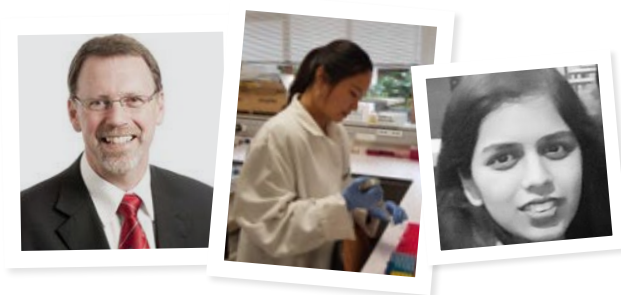
STaR Centre, University of Auckland

Hugo Charitable Trust donated \$250,000 to the Faculty of Medical and Health Sciences at the University of Auckland in support of a new Surgical Translational Research (“STaR”) Centre. The STaR Centre was approved by the Faculty in November 2018.



The opportunity to provide a 'ground floor' donation to the STaR Centre was presented to Hugo by Professor John Windsor, who will head the STaR Centre. Professor Windsor is a surgeon who holds a personal chair in surgery at the University of Auckland and is a 2018 recipient of research funding from the Auckland Medical Research Foundation, which has also received a donation from Hugo.

Hugo's donation has been used to establish two Hugo Charitable Trust postdoctoral research fellow positions at the STaR Centre. The recipients are Dr Jiwon Hong and Miss Sayali Pendharkar.



Pictured above: Professor John Windsor, Dr Jiwon Hong and Miss Sayali Pendharkar.

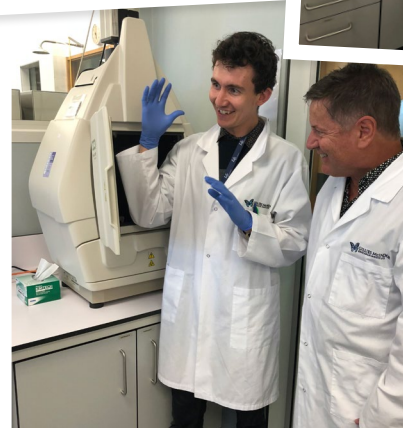
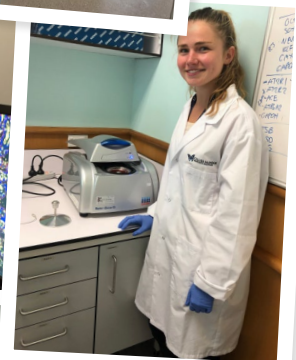
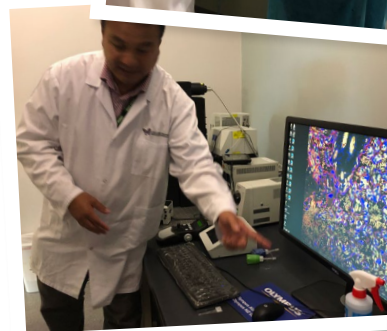
Dr Hong's research is focused on advancing the science of pancreatic disease and critical illness and is mostly based at the Applied Surgery and Metabolism Laboratory within the School of Biological Sciences – one of the four dedicated cross-faculty units of the STaR Centre. Miss Pendharker's research activities focus on pancreatic disease across the spectrum of basic sciences, medical devices and clinical trials.



Cancer Research

Gillies McIndoe Research Institute, Wellington

The Gillies McIndoe Research Institute (GMRI) in Wellington is researching less-invasive ways to treat cancer. In March 2018, members of the Hugo team visited GMRI's lab in Wellington, met with the Institute's lab technicians and PhD students and talked to Executive Director Dr Swee Tan about GMRI's new treatment for glioblastoma, an aggressive form of brain cancer.



GMRI researchers are trialling drugs conventionally used to treat conditions such as high blood pressure to try and halt the growth of cancer cells. Hugo's donation of \$300,000 will fund the first year of a clinical study of the use of ACE inhibitors to treat malignant melanoma.



Northland Hospitals

In two separate donations, Hugo donated a total of \$400,000 to Northland District Health Board (NDHB). The donations, discussed below, were brought to our attention by Hugo Friend Mr Jonathan Masters, a specialist urologist with NDHB who knew Hugh Green. Jonathan looked after Hugh when he was diagnosed with prostate cancer and the two developed a great doctor-patient relationship.

In 2017, Jonathan also referred us to Counties Manukau District Health Board where we were able to donate an Artemis MRI Guided Prostate Biopsy System for the benefit of the Urology Service at Counties Manukau Health.

We have been fortunate to hear from Jonathan and his wife Dr Mandy Masters about some of the healthcare needs in Northland. Dr Mandy Masters works for NDHB as a Senior Rural Hospital Doctor.



Pictured above: Kerry Ludlam, Hugo CFO, Dr Mandy Masters and Kerry Deanne Ludlam, Hugo Accounts Administrator.



Pictured above: Dr Jonathan Masters.

Bay of Islands Hospital

The first \$200,000 donation to NDHB has contributed to the rebuild of Bay of Islands Hospital at Kawakawa. Part of Hugo's donation was used in Stage 1 of the hospital's redevelopment for the new expanded Accident and Medical level.

Two resuscitation bays are now known as the Hugo Resuscitation Bays, in recognition of the clinical equipment and a new telehealth solution that will be available within the Accident and Medical department thanks to Hugo's donation.

Hugo's donation will also be used to buy building materials for the construction of a new Hugo Whānau House on site, which will open in July 2019. *"The Hugo Whānau House means that extended family can be close by without the need to travel the long distances experienced throughout the rural Mid North area."* (Jeanette Wedding, General Manager, NDHB)

Whāngārei Hospital

Hugo's other \$200,000 donation to NDHB will be used to support urology at Whāngārei Hospital, which provides specialist care to all of Northland. NDHB is planning to use Hugo's donation to purchase a new laser machine, a new ultra sound for transperineal prostate biopsies, a flexible cystoscope, and a new urodynamics machine which will be used to study and assess how a patient's bladder and urethra are performing.

Brave Hearts

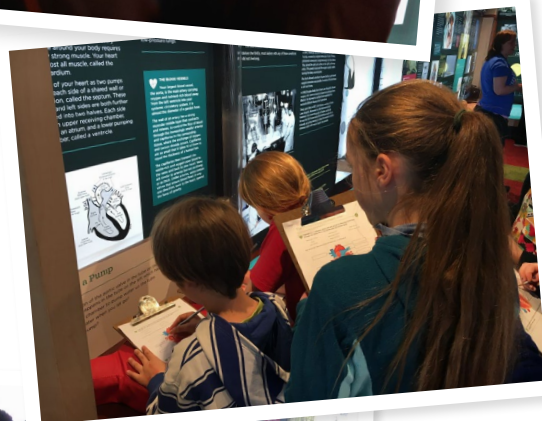
Auckland Medical Museum Trust, Nationwide

Brave Hearts is the first exhibition by the Auckland Medical Museum Trust. The exhibition displays and tells the story of New Zealand's pioneering history of heart surgery. It celebrates the brave medical pioneers who rode a new wave of medicine to learn and teach how to repair the damaged hearts of newborn babies, children and adults.

Together with a dedicated school programme, which includes lessons on the biomechanics of the heart and cardio health, the Brave Hearts exhibition also aims to inspire New Zealand tamariki to consider a career in medicine or science.



An initial \$6,000 donation from Hugo paid the transport costs for 500 Year 8 Students in South Auckland to attend the Brave Hearts exhibition when it was based at AUT's South Auckland campus. A further Hugo donation of \$25,000 will help with operational costs to allow Brave Hearts to travel around New Zealand.



The Spirit of Leadership

No. 4 Squadron Air Training Corps Support Committee, Papakura, Auckland



A \$5,000 donation will give two senior cadets at the No. 4 (Ardmore) Squadron, Air Training Corps, the opportunity to attend a 10-day Leadership Voyage on the Spirit of Adventure.

The deserving cadets (pictured above) are Flight Sergeant Alisha Hickman and Sergeant Ethan Jury.

Papakura Kids

Papakura Kootuitui Trust, South Auckland

We have been hugely impressed with the Papakura Kootuitui Trust and the role the Trust plays in supporting the learning of approximately 1,700 pupils in six schools within Papakura. Formerly a pilot programme established by the Middlemore Foundation for Health Innovation, Kootuitui ki Papakura facilitates:

- digital chromebook provision for each pupil using the Manaikalani teaching methodology and teacher professional development;
- health professionals in every school well above what is normally available; and
- a Home strand focused on enhancing the physical home environment to support improved health and learning.



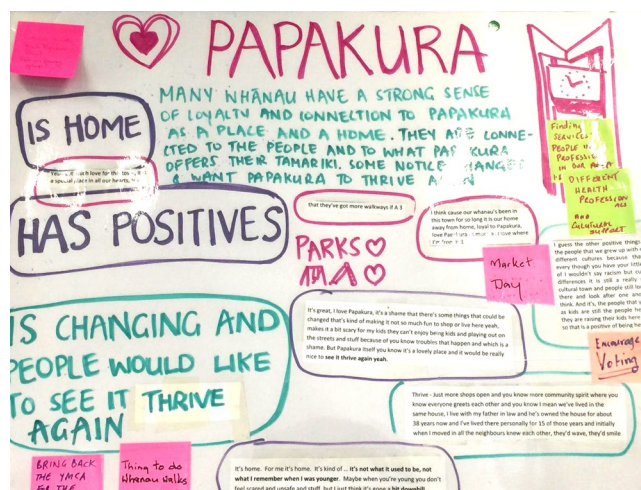
Pictured above: the enhanced health service team at Papakura High School – Sue Iles (senior nurse), Michelle Haare (guidance counsellor), Angem Din (nurse), Kent Christensen (youth worker).

A previous Hugo donation to the pilot programme in 2017 (via the Middlemore Foundation) supported the work of the enhanced health service at Papakura High School by providing the salary of the School's Youth Worker.

The Homes strand uses a co-design approach to the testing of solutions that Kootuitui whānau, based on lived experiences, have raised as crucial to lifelong outcomes for tamariki. Three initiatives were tested under the Homes strand:

- Ko Huimano Warm, Dry, Healthy Homes – a programme providing specialised workshops, home assessment and remediation for ventilation, heating and moisture control in whānau homes;
- Chromebook training; and
- Money Skills (in partnership with Westpac).

Hugo's 2018 donation of \$150,000 will continue to support the Health strand at Papakura High School and the Homes strand of the Kootuitui programme.





In Memory of Marion

Vincentian Home and Hospital, Wellington

A Hugo donation of \$10,000 was made to Vincentian Home and Hospital (Vincentian) in memory of Hugh's sister, Marion Kitchenman, who passed away on 14 March 2018. With this donation Vincentian has purchased a ceiling hoist.



Hugh Green and Marion Kitchenman (2006)

"We currently have one of these hoists but with the increasing frailty and acuity of our residents we are finding that almost all of the hospital residents now require hoisting" said Sue Delahunt, Vincentian's Manager. Hugo was very happy to provide this much needed equipment in Marion's memory.

Positive Cultural Identity

Paeroa Central School, Paeroa, Northern Waikato
Region of the Thames Valley



Paeroa Central School offers both Māori immersion and English medium classes. The School's Te Roopu Kapa Haka o Te Kura Tuatahi o Paeroa (kapa haka group) assists the teaching of Te Reo and Te Ao Māori at the school. It also *"encourages our children and whānau to be proud of who they are, where they come from, hitori (local history) and to reflect on where they are going (global citizenship)"* says Principal Mona Hingston.



Hugo's donation of \$4,000 will be used for the school's kapa haka noho marae trip in 2019.

HomeGround

Auckland City Mission (ACM), Auckland City



The Hugo Charitable Trust is proud to make a Leadership Gift donation of \$250,000 to the ACM's Mission HomeGround Project. Mission HomeGround is based on an international best practice model called Housing First and aims to help eliminate chronic homelessness in Auckland. It will provide a new home for the ACM as well as accommodation for 110 people and 30 detox beds. The new complex will also house a community centre with commercial kitchen, social workers on site, a café, art gallery and a medical centre with dental and mental health services.

The ACM refers to the following whakataukī (proverb) on its website, which resonates with us here at Hugo:

Nāku te rourou nāu te rourou ka ora ai te iwi / With your basket and my basket, the people will live.

Wellness Through Art

Arts for Health Community Trust, Hamilton



Arts for Health Community Trust is a charitable trust providing a venue for people who are unwell or working towards maintaining their wellness using creative arts. We hope that Hugo's donation of \$2,000 will help the Trust assist the artists with some of their projects.

Seasons For Growth

Grief and Loss Support Services, Auckland

Grief and loss are issues that we know can affect the state of our mental health. Hugo is pleased to see groups like Grief and Loss Support Services Committee (GALSS) trying to make a difference to the mental wellbeing of those enduring a time of sadness and vulnerability. Hugo's \$25,000 donation will go towards the salary of the Field Worker and Trainer of GALSS' Seasons for Growth programme.



The Seasons for Growth programme is an 8-week school and community-based programme which children and adults can access at no cost. The core intentions of this programme are the development of resilience and emotional understanding to strengthen the social and emotional wellbeing of children and adults affected by death and isolation. Over the past year the Seasons for Growth programme has offered guidance to over 500 children and adults suffering from grief such as death and family separation.

"It's ok to talk about my Dad to my Mum even though we cry. I feel better inside, and we go to the cemetery now." (Eight-year-old participant in the Seasons for Growth programme)

Mobile Laundry

Orange Sky New Zealand, Nationwide

Five years ago, two 20-year olds, Lucas Pachett and Nic Marchesi, wanted to do something to bring a smile to the faces of homeless in their Brisbane community and also improve their hygiene standards. As a result, Orange Sky Laundry was launched – a world first, free mobile laundry (and later shower) service. However, it did not take long for Lucas and Nic to realise that they had stumbled upon something much more significant than just a laundry service for the homeless. In the time it takes for someone's clothes to be washed and dried, Orange Sky volunteers and friends on the street have ample time to initiate genuine conversations and connections.



Hugo's donation of \$215,000 enabled Orange Sky to bring their first van, aptly named 'Hugo', over to New Zealand and launch in Auckland in October 2018. Hugo is proud to be Orange Sky NZ's inaugural van partner in New Zealand. We believe that Orange Sky NZ's mission to provide clean clothes, warm showers and non-judgmental conversations will help foster positive connections for people experiencing homelessness in Auckland.

Orange Sky NZ needs at least 100 volunteers to run all their shifts with the Hugo van, so they are relying on the Auckland community to support that volunteering.

Bohemian Rhapsody

Home and Family Counselling, Auckland

Anna Stewart, a Hugo Friend, volunteers at Home and Family Counselling and helped organise the charity's 2018 movie night fundraiser 'Bohemian Rhapsody', which was a tremendous success.



Pictured above: Matt Rawling, Brittany Stewart, Fleur Helsby, Anna Stewart, Connie Miller, Aoibheann Monaghan and Bruce Stewart.

Home and Family Counselling was founded 125 years ago with the original focus of helping woman and children who had been abused or abandoned. Since the 1980s, the charity's core work has involved providing individuals and families with face-to-face counselling. Year on year, Home and Family have discovered that their services are becoming more sought after with over 1,645 cases reported to Home and Family Counselling in 2018.

"Our aim is to reduce risk, increase safety, and improve emotional well-being and resiliency."

Hugo is delighted to know that this donation of \$5,000 will assist Home and Family Counselling provide their essential services to the Auckland community.

Foster Hope

Foster Hope Charitable Trust, Nationwide

Foster Hope was extremely grateful to Alice Watson who handmade 30 beautiful quilts (pictured below) which were distributed to children in foster care in Auckland.



Alice Watson,
Hugh's granddaughter.

As Foster Hope informed us, there are over 5,000 children in state foster care in New Zealand and many of those children arrive at their new placements with nothing but the clothes on their backs or with belongings in a black rubbish sack. Foster Hope is doing great work to make sure that children in foster care know that people in the community care about them. The charity make up kits to be given to children when they are removed from their homes with a backpack containing toiletries (toothpaste, shampoo) and other items to show they are loved (books, soft toys, pyjamas).



Pictured above: Julia and Louise Allnutt, Auckland Co-ordinator and Chairperson, Foster Hope.

The Open Home Foundation, a child and family support service, received some of Alice Watson's beautiful quilts. The Open Home Foundation highlighted to us the issue of the increasing number of children requiring immediate care and the growing demand for more foster families.

Hugo's \$5,000 donation to Foster Hope will go towards a fun activity day for foster children and their families to connect and enjoy a deserved day out.

Cooking For Good

Bellyful NZ, Wellington



Bellyful NZ coordinates a network of 21 branches around the country with a network of 520 volunteers who provide meals to families with new-born babies and those battling illness.



Hugo's donation of \$10,000 will help support the role of Bellyful NZ's Volunteer and Operations Manager. A separate \$5,000 Hugo Friends donation will benefit the Hibiscus Coast branch of Bellyful NZ.

Art Talk

Connect the Dots, Auckland

Auckland charity, Connect the Dots, has developed an innovative visual arts programme called Make Moments. Trained art educators deliver facilitated art tours and art making at local art venues around Auckland for older people and people living with dementia.



The Make Moments programme helps participants with dementia elevate their mood, establish social connections, integrate back into the community and enjoy meaningful activity. Hugo's donation of \$50,000 has helped support the salary of the Art Director, Andrea Gaskin, and the delivery of the Make Moments programme.

Hugo thanks Auckland lawyer Priscilla Brown for introducing us to Connect the Dots.



The League

Te Awamutu Catholic Women's League

Hugo would like to thank Hugo Friend, Glenda Taylor, Solicitor at Tompkins Wake in Hamilton, for introducing us to the Te Awamutu branch of the Catholic Women's League (the League).

The Te Awamutu branch of the League has been providing service to their parish and community for an impressive 81 years. The current group of about 30 women give up many hours volunteering each week. They are using Hugo's \$10,000 donation to assist people in their community.

Some of the recipients they have helped include a young woman with a variety of disabilities; a six-year old student who was recently diagnosed with lymphoma; and a woman who is living with the consequences of an horrific car accident.



Pictured above: the Te Awamutu branch celebrating 80 years, 25 August 2017.

Hugo thanks Te Awamutu Catholic Women's League Secretary Ruth Wilson for her regular, diligent reporting and keeping us abreast of how Hugo's donation is being used.

The letter on the next page is an example of one of Ruth's great reports. It outlines a recent donation and explores connections between the League and Hugh Green. The letter also mentions lawyers, Glenda Taylor and Stephanie Ambler, from Hamilton law firm Tompkins Wake, who gave a presentation to the League in September 2018 on the background to Hugo Charitable Trust and Hugh Green's legacy.

The League

Te Awamutu Catholic Women's League

49 Golf Road
TE AWAMUTU 3800

9 October 2018

Dear Maryanne

My grateful thanks for your many generous kindnesses to our League branch - it is certainly appreciated by all. Thanks so much for the four donated books on Hugh's life - so very interesting to all, especially to farming people and folks who have worked with their hands. My, but your Dad and Barney certainly took many difficult ways to be entrepreneurs and then the generosity of your family to hundreds of folks in need is most inspiring.

The original book to be held by our branch, is going around the other members who were undecided whether to purchase a copy for themselves so all are participating in your family's journeys. The remaining four copies arrived yesterday and I will visit Glenda Taylor to pay for these remaining four ordered when we travel to Hamilton tomorrow. Our meeting is next week and the eight members who indicated originally will be thrilled to receive their copies - two have family members who conducted business with your Dad - amazing for them to now purchase their copies to enjoy the paths the families travelled.

Next week we are donating a further \$500 to Swim Waikato branch in our town who wish to involve Plunket mothers and babes in a swim programme, these funds will pay for the first two lessons. The lady who is instigating this programme is most enthusiastic about receiving your Trust's funds and will be our guest speaker for October. When Stephanie and Glenda spoke last month our members were then made well aware of who "Hugo Green" was and his wonderful generosity - as a young child I well remember the road and earth works carried out by the firm so was amazed so few of our members had ever heard of Green & McCahill - many are older than I am so that was most enlightening to me. NOW, they know and are more understanding of our efforts to give to people in need.

We are greatly indebted to you and the Trust, Maryanne, and thank you most sincerely for huge donations.

Yours sincerely,



Ruth Wilson

Art Therapy

Māpura Studios, Auckland

Māpura Studios, located in Fowlds Park right next to the Auckland Irish Club, offers art classes and art therapy programmes for people of all ages living with disabilities, impairment or other social and personal need. Hugo's donation of \$30,600 will go towards a 12-week stroke art therapy programme and to help expand Māpura's services into South Auckland to engage Māori and Pacific participants.



"Your generous donation will help us increase the spread of access to events around New Zealand, providing platforms for further sharing of information, opportunities to meet local NZRMTh and, where possible, provide experiential opportunities for people to engage with." (Linda Webb, MThNZ Council President, and Shari Storie, NZ registered music therapist)

Argo Trust

Argo Trust, Wellington



Music Therapy

Music Therapy New Zealand (MThNZ), Nationwide

Kerry Ludlam, Hugo's CFO, volunteers his time as a member of the MThNZ council.

Music Therapy New Zealand aims to raise awareness of the benefits of music therapy for individuals with emotional, intellectual, or physical needs. It also supports continued research into music therapy and maintains high standards of ethical practice for New Zealand registered music therapists. Hugo's donation of \$45,900 funded some of MThNZ's communication projects and was used to support Music Therapy Week which ran successfully during October 2018.

The Argo Trust offers a flatting-like living situation with full staff support for people with profound intellectual and physical disabilities.

During a Hugo visit to meet the residents, manager and some of the support staff in Wellington, it was evident that Argo Trust are committed to ensuring the dignity of their residents and improving their independence and quality of life. To help with this goal, Hugo donated \$67,000 for the purchase of a specially fitted out van that will enable all of Argo's residents and staff supporting them to travel on outings together.

Sister Jean's Legacy

Growth In Faith Together (GIFT) Centre,
Mt Eden, Auckland

GIFT centre was established by Sister Jean Sinclair in 1973 to provide religious education to children with disabilities. The centre is used now as a residential care home for people with intellectual disabilities. The eleven residents are supported by the trained Community Support Workers who do their utmost to make sure that the residents lead fulfilling and independent lives.



Hugo was delighted to reconnect with the GIFT Centre. GIFT Centre was a charity Hugh helped over many years. Hugh and Maryanne had a wonderful relationship with Sister Jean who was very hard working, passionate and dedicated to the GIFT Centre's mission. Maryanne was delighted to find out the GIFT Centre is still running and thriving *"as it is such a wonderful legacy to Sister Jean"*.



The \$80,000 donation made by Hugo has been used to purchase two new 8-seater vehicles (total of 16 seats) for the 11 residents to be transported to different facilities and events.

Hugo would like to thank Monsignor Bernard Kiely for connecting us with the GIFT Centre.

The Navigate Initiative

Pathway Trust, Christchurch

Pathway Trust in Christchurch has developed a ground-breaking new reintegration project called The Navigate Initiative. The Trust has partnered with the Department of Corrections and other community health, counselling, employment, education, iwi and church organisations to develop an intensive reintegration support unit inside Christchurch Men's Prison. The Navigate Initiative aims to support men who are nearing the completion of their prison term and continue to support those men when they leave prison and transition back into the community.



Pictured above: Anaru Baynes, Tu Ora Navigator; Carey Ewing, Reintegration Manager; Luan Smith, Tu Ora Navigator.

Hugo's donation of \$45,000 will cover the cost of a part-time leader and the restorative justice development costs for the first year of the Navigate Initiative pilot.



Supporting Rainbow Youth in the South

RainbowYOUTH, Nationwide

RainbowYOUTH is a youth-led, youth-run charity, with a vision to make Aotearoa a place where all young people thrive, regardless of their identity.



Hugo's recent donation of \$20,000 will help RainbowYOUTH with the development of peer support services in the South Island and the charity's work assisting youth in that region.

We would like to thank Hugo friend, Bryce Davey, Partner at law firm Tompkins Wake, and his wife Cathryn, for connecting us with RainbowYOUTH.

Hope Rising

Hope Rising Farm Charitable Trust, Ngaruawahia

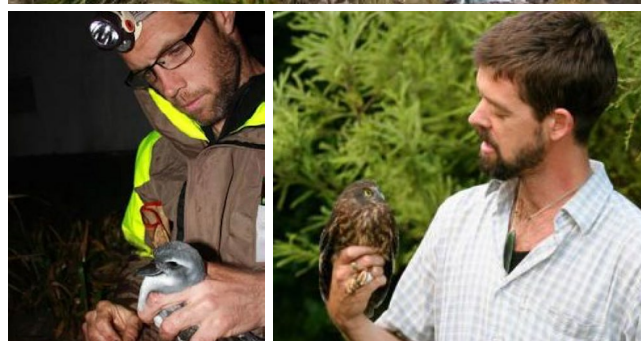
Hugo's donation of \$4,100 to Hope Rising Farm Charitable Trust covered the cost of one six-week 'Time Out With Horses' programme. The programme provides at-risk children aged 6-16 years a farm experience with horses and donkeys. On the six-week programme, children learn about handling horses and donkeys, participate in their care and in doing so learn about trust, communication, relationships, facing challenges and fears.



Saving The Stitch Bird

Hihi Conservation, Nationwide

The Hihi (stitch bird) is among New Zealand's most endangered native bird species. Hugh's great nephews, Dr Kevin Parker and Graham Parker, and the rest of the team at Hihi Conservation are committed to protecting the Hihi population. Hugo's donation of \$10,000 to Hihi Conservation will assist with its recovery plan for the endangered Hihi bird and translocation efforts.



Pictured above: Graeme Parker (left) and Dr Kevin Parker (right).

Project Jonah

Project Jonah, Nationwide



Hugo made a \$5,000 donation to Project Jonah – a nationwide charity which focusses on the protection of marine mammals in NZ waters.

Project Jonah has a database of 3,500 volunteers around the country and a small, but dedicated team, who help with whale and dolphin strandings.

Thank you to Hugo friend, Matthew Harris, Partner at Auckland law firm, Gilbert Walker, for bringing this charity to our attention.



Predator Eradication

Wakatipu Wildlife Trust, Lake Hayes, Central Otago



Hugo made a donation of \$4,000 to the Wakatipu Wildlife Trust for its predator free programme on the Lake Hayes track.

The Lake Hayes track is a popular track for locals and tourists to admire the beautiful scenery of Central Otago. In total, 38 Doc 200 traps have been placed around the lake. These have all been baited with

processed rabbit meat and an egg, strategically set up 200 meters apart, and are now being monitored on a regular basis. The Wakatipu Wildlife Trust is doing great work to protect the native environment.

Look to the Future

Sir Peter Blake Trust, Auckland and Northland



Sir Peter Blake Trust, in partnership with New Zealand Geographic, has developed an underwater virtual reality experience (NZVR) to provide school children with an immersive experience of the Hauraki Gulf and wider northern New Zealand marine environment. Short documentaries showcase the rich biodiversity that exists in our marine environment, as well as the damage that has occurred. *"The project will promote understanding, engagement, and a greater sense of kaitiakitanga for our oceans, and students will be encouraged to take action to protect our oceans and waterways."* (Sir Peter Blake Trust)



The NZVR programme is being launched in schools in Auckland and Northland in 2019. Hugo's donation of \$40,000 will cover the costs of 70 VR headsets, educator backdrop and resources for the programme.

Able and Willing

Abilities Group, Auckland

Abilities Group aims to enrich the lives of people with disabilities through meaningful employment. Around 70% of Abilities staff have a disability of some kind.



Abilities Group is another charity that Hugo supported over the years, helping them purchase a shrink wrap machine and a small truck. Hugo's donation of \$100,000 in 2017 enabled Abilities Group to purchase a larger truck to assist with its expanding recycling business.



In October 2018, we took the opportunity to visit Abilities Group on the North Shore in Auckland and have a look at the truck Hugo donated. A big thank you to the Abilities team for hosting us and taking us on a wonderful tour of their workplace.

Hugo Coats

Auckland City Mission, Auckland



Pictured above: ACM Homeless Outreach & Support Service Team member.

"We have distributed almost all the [Hugo] sleeping bag coats over winter and they have been incredibly well received by our rough sleeping clients. One of the clients told us that the coat was so warm and made sleeping much easier." (Alexis Sawyer, ACM Fundraising Manager)

Victor

Auckland City Mission, Auckland

Last year Hugo purchased Victor's portrait from New Zealand Artist, John Crawford. The proceeds from the purchase of these portraits went to the Auckland City Mission.

The photo below was taken when Victor, who lives on the streets in the Auckland CBD, visited the Hugo office to have morning tea with the Hugo team.





Bruce Stewart speaking at the Founders Day Assembly at Dilworth.

Dilworth School

Bruce Stewart's Speech at Dilworth Prizegiving

Bruce Stewart (Hugo Trustee) is an old boy of Dilworth School. During the Dilworth Founders' Day Assembly in March 2018, three students – Harrison Dudley-Rode, Nathan Su'a and Bradley Egglestone – were awarded Bruce Stewart QC Scholarships to the Royal School of Dungannon in Ireland gifted by the Hugo Charitable Trust. The scholarship recipients will work as resident Tutors at the Royal School of Dungannon in 2019.



The Hugo team visited the Royal School of Dungannon (County Tyrone, Ireland) during their trip to Ireland in July 2018.

Dilworth School students – Harrison Dudley-Rode, Nathan Su'a and Bradley Egglestone.



2018-2019 Hugo Friends' Nominations

At Hugo Charitable Trust we believe in a model of giving that involves our communities and helps promote a community spirit of giving. In addition to our three Hugo Dragons' Den Donations (discussed below) a number of people helped us with our Hugo Friends' Nominations this year.

The Hugo Friends' Nominations are a great way for us to discover new charities that we have not previously heard of. In addition, we get to learn more about the charitable groups working with communities around Aotearoa New Zealand that our Hugo Friends are passionate about.

In total, \$250,000 was donated to 68 different charities nominated by 80 Hugo Friends, including 10 young people (8-14 years).

Cambridge Riding for the Disabled

"This Charity gives everyone a chance to experience horses and combines two of my interests - horses and children."

– Hugo Friend (14-year old girl)

Canteen

"Because my friend has a sister who had cancer and I want to support people like my friend's sister. She got cancer at 3 years old and is in remission. She is now 6 years old and in Year 2 at my school."

– Hugo Friend (9-year old girl)

Eat My Lunch

"Hugo's donation will really help them towards their goal of making sure all kids get a lunch."

– Hugo Friend (12-year old girl)

SPCA

"I have chosen the SPCA because they help a lot of animals to live a happy life after they have been dumped somewhere like a muddy place or under a bridge and help the neglected animals. Thank you so so much for giving me this opportunity to donate to the SPCA and Again thank you."

– Hugo Friend (8-year old boy)

Make a Wish Foundation

"I wish to support children who are critically ill and would like them to be able to do something special with their families."

– Hugo Friend (9-year old girl)

Riding for the Disabled

"Riding for the Disabled because not long ago I started horse riding lessons and think it brings joy to 90% of children in the world. Sadly not all children get to have a go at all of that laughter and joy on a horse and because of their disabilities they have gotten told that it's too dangerous to sit on the back of a horse."

– Hugo Friend (10-year old girl)

The Key to Life Foundation

"Children and teens are being taught that suicide and mental health issues are something to be ashamed of, not talked about. But that is not true, and The Key to Life Trust knows and is trying to change that."

– Hugo Friend (13-year old girl)

Waikato Junior Golfing Society

"This is a non profit organisation, which was formed in 1960 when children were not allowed on golf courses. The Society ... fundraises annually to try and raise funds, all of which go to supporting boys and girls in the Waikato."

– Hugo Friend (12-year old boy)

World Animal Protection New Zealand

"Because this charity works with other animal welfare organisations to find practical ways to prevent animal suffering worldwide."

– Hugo Friend (10-year old girl)

Youthline

"To me Youthline seemed to be a really good charity as I thought it was sad that kids thought of taking their life when they felt depressed. It is good that they also help kids who are being bullied by giving them advice."

– Hugo Friend (10-year old boy)

If you would like to become a Hugo Friend and receive a copy of our Newsletter/Annual Report, please email Aoibheann Monaghan at: aveen@hugocharitabletrust.nz

Donations to Individuals

Hugo has made a series of \$5,000 donations to the following individuals. To each, we send all of our prayers and good wishes - Bail ó Dhia ort agus ádh mór ort. Arohanui from the Hugo team.

Sarah Cato, Auckland



Sarah Cato was diagnosed with stage 4 metastatic breast cancer in 2014. Hugo's donation will contribute to the cost of Sarah's treatment.

Leehane Stowers, Auckland



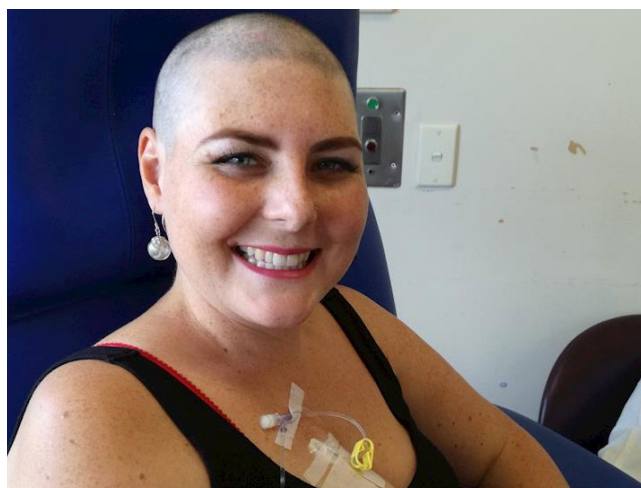
Leehane Stowers was diagnosed with early stage breast cancer in 2015. Then, after a period of being cancer free, Leehane was told in 2018 that she had secondary metastatic cancer. We hope Hugo's donation will help contribute to Leehane's treatment while she continues her fitness goals and living life to the fullest.

Kerri Birdthistle, Auckland



Kerri Birdthistle, originally from Limerick, Ireland, but now living in Auckland, has advanced stage 4 mixed cellularity Hodgkin Lymphoma. As the family's bread-winner, Kerri and her family are now struggling financially as her poor health leaves her unable to work. We hope Hugo's donation will help a little to support to Kerri and her family through her illness.

Meridee Walter, Auckland



Two years ago, Meridee Walter was diagnosed with Adrenal Cancer, which had already spread. Adrenal Cancer is a rare illness with only one in a million people diagnosed each year. Hugo's donation will help Meridee with her fundraising efforts for immunotherapy treatment, which is not covered by the public health system.

Lizzie McKay, Central Otago

Hugo Friend Josie Spillane introduced us to her dear friend Lizzie McKay. Josie previously worked at Cure Kids and this is where she met Lizzie when Lizzie was 12-years old.



Lizzie with her parents on the 5th anniversary of her lung transplant.

Lizzie and her brother (both 27 years old) from Central Otago live with Cystic Fibrosis. Five years ago, Lizzie was sent home for palliative care. She was then given a lung transplant which turned her life around.

Diabetes is one of Lizzie's health issues that she finds more and more difficult to deal with. Hugo's donation will pay for the sensors for Lizzie's Glucose Monitoring System. This will help Lizzie to control her diabetes for two years.

Stevie Whittaker, Auckland



Stevie was diagnosed with a brain tumour in August 2018. Stevie's dad Tui had been battling Thyroid cancer and Stevie's sister Taya has Down Syndrome. Hugo's donation will be used to help ease the load for Stevie's family.

Corey Keeling, Taranaki (RIP)



Hugo Friend, Oliver Lee, mentioned Corey's story to Hugo. Oliver knows Peter Keeling who is an uncle of Corey's Dad, Hayden. Corey, a two-year old from Taranaki, was diagnosed with stage four Neuroblastoma in March 2018. Brave Corey underwent a series of treatments and had many supporters and well-wishers.

The Hugo team were upset to hear the very sad news that Corey passed away on 28 March 2019. Our thoughts and prayers are with Corey's family.

Vehicles donated or supported by Hugo

You might spot one of the following cars or vans in your neighbourhood!



Argo Trust,
Wellington



InZone, Epsom



The Hugo Team Mini,
Auckland City



Moko Foundation,
Northland



Kākano & Mixit Van,
West Auckland



2 x Vans to the GIFT
Centre, Mount Eden



Vehicles donated or supported by Hugo



Mount Richmond School,
South Auckland



Hugo House,
Arrowtown



Sir Peter Blake Trust, NZ-VR
Outreach Programme,
Auckland and Northland

Orange Sky,
Auckland



Abilities Group,
Auckland





Last year we invited three different groups to research and shortlist charities they either had a special connection to, or that inspired them. The groups were then invited to report back and pitch their favourite charities to Hugo's trustees in a "Dragons' Den" style presentation. You can read about the charities Hugo donated to on pages 40-42 below.

The three groups who participated in the Hugo Dragons' Den Donations were:

Hugo would like to say a big thank you to the three groups for their enthusiasm, the time they spent researching their charities and their informative "Dragons' Den" presentations. We would also like to thank the groups' supporters: Stephanie Ambler and Bryce Davey (Partners at law firm Tompkins Wake); Anna Stewart (Matriarch of the Stewart clan) and Bruce Stewart (Hugo Trustee); and Matthew Harris and Iva Rosic (Partners at law firm Gilbert Walker).

If anyone is interested in volunteering to put together a Dragon's Den group to research and pitch charities to Hugo's trustees, please contact aveen@hugocharitabletrust.nz.

Solicitors from
Tompkins Wake
in Hamilton: Angela
Vanderwee, Briar Shaw,
Samantha Lee and
Misty Taoho.

The
Stewart family:
Charlie Stewart and
Laura Milliken, Britany
Stewart and Matthew
Rawlings, Charlotte
Stewart and George
Bracken.

Solicitors from
Gilbert Walker
in Auckland: Sam
McMullin, Sarah Alawi
and Ana Leonard.

Barnardos, Hamilton

This charity was presented to the Hugo trustees by Angela Vanderwee, a solicitor at law firm Tompkins Wake.

Hugo's donation of \$40,000 will help Barnardos deliver its Footsteps to Feeling Safe programme to Waikato children. Footsteps to Feeling Safe is an educational programme for children who have been witness to or experienced family violence. The nine-week programme is designed to help children work through the impacts of family violence and also learn a range of strategies to keep themselves safe.



Tompkins Wake: CEO, Jon Calder (far left); Angela Vanderwee, Senior Solicitor (middle); and Stephanie Ambler, Partner (second from the right).

Rainbow Place

Waikato Hospice, Hamilton

This charity was presented to Hugo by Briar Shaw, a solicitor at Tompkins Wake. *"I chose Rainbow Place because I think it is a unique and incredibly special charity that does great work in the Waikato for children and families going through really rough times,"* said Briar.



Pictured left to right: Tompkins Wake CEO Jon Calder; Rainbow Place Team Leader Zoe Fairbrother; Rainbow Place Nurse Jess Dwyer; Hugo Dragons Den participant and Solicitor at Tompkins Wake Briar Shaw; and Hospice Waikato CEO Craig Tambllyn.

Hugo's donation of \$50,000 will go towards the costs of the inpatient unit and respite care services at Rainbow Place.

Rainbow Place is part of the Waikato Hospice. It provides services to young people who have a life limiting illness, and those in need of grief or loss counselling and support, as a result of either the illness or the death of a close relative who has been in hospice care.

As Children's Nurse, Jessica Dwyer, notes: *"it's a very lonely world when you have a sick child. You can't do normal things like go to the park with your kids. The things parents with healthy children take for granted..."*

A Fresh Start

RAW 2014 Ltd, Hamilton

Young lawyer, Samantha Lee, of Tompkins Wake proudly and successfully pitched for the work of RAW to Hugo's trustees. Hugo's donation of \$50,000 will help RAW deliver its programme to women leaving prison who want a different life on release from prison.



Above: Samantha Lee, Solicitor at Tompkins Wake, with RAW founder, Annah Stretton.

The RAW (Reclaim Another Woman) charity was set up to work with recidivist female offenders. RAW's programme, which is focussed on education, employment and intensive peer support, is in its fifth year of successfully rehabilitating and reintegrating women with backgrounds in criminal offending who were previously stuck in a destructive and repetitive cycle.

In the words of one of the RAW women: *"Being a part of RAW is something really special ... we are a tight knit group who thrive off each other's successes. I have people who are here for me whenever I need them ... don't get me wrong life still gets stressful ... but it's good stress and I have support, I'm not alone ... They believe in me."* (from 16 May 2018 post on RAW Website)

Reducing Foodwaste

Kaivolution, Waikato Environment Centre Trust

Kaivolution was presented to Hugo by Misty Taoho, a solicitor at Tompkins Wake who also volunteers at Kaivolution.

Kaivolution is a food rescue charity that redistributes to community organisations in the Waikato. The charity acts as a link between the food industry and community groups. Its aim is to stop edible food from being needlessly thrown away and ensure that it reaches those in the community who are struggling or vulnerable.

Misty provided a local's insight into the impact Kaivolution is making by sharing with Hugo that Kaivolution supports 62 charities in the Waikato community. Hugo's \$40,000 donation will go towards the cost of operating the Kaivolution food rescue.



Above: Kaivolution volunteers and Misty Taoho (Middle), Solicitor at Tompkins Wake.

New Research into Spinal Cord Injuries

Spinal Cord Injury Research Facility – The University of Auckland School of Medicine Foundation

In their Dragons Den group, Charlie Stewart and Laura Millikin, gave a presentation on the Spinal Cord Injury Research Facility (SCIRF) and the CatWalk Spinal Cord Injury Trust (CatWalk) to Hugo's trustees.

SCIRF is located within the Centre for Brain Research in the Faculty of Medical and Health Sciences at the University of Auckland. It was established in 2011

with funding from CatWalk. The facility is made up of a number of scientists and students all working towards making a meaningful difference for people with spinal cord injury.

As a result of Charlie and Laura's research and presentation, Hugo made a \$20,000 donation to SCIRF. We understand the donation is being used to support a PhD project developing a novel way of looking into the spinal cord after injury.

As Dr Simon O'Carroll, Director of the SCIRF, explained to Hugo: *"This exciting new research will help us to better understand the changes that occur and make sure that the treatments we are developing are as effective as possible"*.



Above: Laura Milliken and Charlie Stewart.

Supporting Kids' Dreams

I Have A Dream Charitable Trust, Whāngārei

Brittany Stewart and Matthew Rawlings (pictured below presenting to Hugo's Trustees) chose I Have A Dream Charitable Trust's Ngātahi Education Initiative. This programme is about inspiring Kiwi kids growing up in material hardship to choose their own path to academic and life success.



I Have A Dream Charitable Trust, Whāngārei (cont...)

As part of the Ngātahi Education Initiative, 'Navigators' walk alongside children to help them steer their own educational pathways and navigate any disruptions they encounter along the way.



Thanks to Brittany and Matthew's efforts, Hugo has donated \$30,000 to support 30 Northland children ('Dreamers') to participate in the Ngātahi Education Initiative in Whāngārei.

Stroke Prevention

Stroke Foundation, Nationwide

The final pair in the Stewart Clan Dragons Den group – Charlotte Stewart and George Breckon – presented on the Stroke Foundation. Charlotte and George highlighted the important role the Foundation plays for many New Zealanders. Around 9,000 people have a stroke in New Zealand each year and the Stroke Foundation *"gives free advice, support and hope to stroke survivors, their family, whānau and carers"*.



Above: George Breckon (far left) and Charlotte Stewart (second from right).

Hugo's donation of \$20,000 will be used for the Stroke Foundation's Pacific Stroke Prevention Project in Auckland, which has been set up to contribute to a reduction in risk of stroke in Pacific communities by:

- raising awareness of stroke and stroke risk factors; and
- promoting awareness and understanding of the relationship between salt, high blood pressure and stroke.

Creative Moves

Kākano and Mixit, West Auckland

Lawyer, Sarah Alawi, presented on Kākano as part of the Gilbert Walker Dragon Den Group. As a result, Hugo made a donation to Kākano in late 2017. We would also like to thank Hugo friend, Iva Rosic, Partner at law firm Gilbert Walker in Auckland, who supported Sarah and this donation. Impressed with Kākano's work, Hugo decided to make a further donation to help the charity address its transport needs.

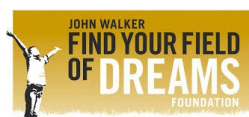


Kākano runs a visual arts initiative for vulnerable young people in West Auckland aged between 12 and 20 years. MIXIT offers young people from refugee backgrounds a space to engage in performing arts and mix-it-up with local and other migrant youth. As both charities operate out of the Corban Estate Arts Centre in Henderson, they decided to collaborate to solve their respective transport issues.

Hugo's donation of \$28,000 helped Kākano and MIXIT purchase a brand new van for both groups to share and also contributed to Kākano's van operating costs.



Charities Supported by Hugo:



Orphan Kids Charity



Guardian Angels Charitable Trust



ŌPĀWA SCHOOL



Charities Supported by Hugo:




baskets of blessing



2018-2019 Hugo Donations

Charity 	Purpose 	Donation
A Girl Called Hope	Hugo Friend Nomination	\$ 1,000.00
Abilities Group	Truck Signage	\$ 5,000.00
Alan Duff Charitable Foundation	Hugo Friend Nomination	\$ 2,500.00
Argo Trust, Wellington	Customised Toyota Hiace Van fitted with Hoist & Wheelchair Belts	\$ 67,000.00
Arts for Health Community Trust	Art therapy for disadvantaged & marginalised groups in the Hamilton community	\$ 2,000.00
Auckland City Mission (Mission Homeground)	Mission Homeground project	\$ 250,000.00
Auckland Foundation	Hugo Friend Nomination	\$ 5,000.00
Auckland Medical Museum Trust	Educate, Engender Pride, Improve Understanding & Motivate Young People	\$ 31,000.00
Auckland Rescue Helicopter Trust	Westpac Rescue Helicopter - Waiheke to Auckland ocean swim	\$ 1,000.00
Autism New Zealand	Hugo Friend Nomination	\$ 5,000.00
Baradene College of the Sacred Heart, Auckland	Scholarship for Years 7 - 13	\$ 50,000.00
Barnados	Waikato Footsteps to Feeling Safe programme	\$ 40,000.00
Baskets of Blessings	Hugo Friend Nomination	\$ 2,500.00
Bellyful, Hibiscus Coast	Hugo Friend Nomination	\$ 5,000.00
Bellyful, Wellington	Cook & Deliver Meals to Families	\$ 10,000.00
Big Buddy	Hugo Friend Nomination	\$ 5,000.00
Camp Quality New Zealand	2018 priority areas: raising awareness, volunteer training, new volunteer management system	\$ 20,000.00



Charity 	Purpose 	Donation
Canteen	Hugo Friend Nomination	\$ 1,500.00
Caring Crew NZ	Care packs provided to parents/ caregivers with a child in hospital	\$ 212.50
Catholic Social Services	Hugo Friend Nomination	\$ 2,500.00
CCS Disability Action Southland	Hugo Friend Nomination	\$ 2,500.00
Celtic Flute School of New Zealand Inc.	Ceol Aneas Traditional Irish School Music Festival	\$ 5,000.00
Christchurch Foundation	Support of families & the wider Christchurch muslim community impacted by the Terrorist attack on their Mosques	\$ 50,000.00
Christchurch Heart Institute Trust	Hugo Friend Nomination	\$ 5,000.00
Connect the Dots Charitable Trust	Director's salary for the Make Moments programme	\$ 50,000.00
Corey Keeling	Corey Keeling - "Corey the Brave" (Givealittle Page)	\$ 5,000.00
Cystic Fibrosis NZ	Hugo Friend Nomination	\$ 2,500.00
Dance Therapy NZ	Christchurch development programmes & continuation of the Arts 4 Us South programme	\$ 10,000.00
De Paul House	2 x Hugo Friend Nominations	\$ 7,500.00
Dialysis Machine (Otago)	Gambro RO model WR0300H with product water stainless connector	\$ 11,787.50
Diarmuid Barron	Diarmuid Barron - "Do it for Diarmuid" (Givealittle Page)	\$ 2,000.00
Dilworth School	Bruce Stewart QC Scholarships for 3 Dilworth leavers to attend the Royal School of Dungannon as GAP tutors in 2020	\$ 65,000.00
Eat My Lunch	Hugo Friend Nomination	\$ 4,000.00
EK (Eakalafi) Taeiloa	Papakura High School Student Scholarship	\$ 4,020.25

Charity		Purpose		Donation
Federation of Islamic Associations of New Zealand (FIANZ)		Support of families & the wider Christchurch muslim community impacted by the Terrorist attack on their Mosques	\$	50,000.00
First Foundation		Hugo Friend Nomination	\$	5,000.00
Foster Hope Charitable Trust		Support for Foster Parents & Kids	\$	5,000.00
Foster Hope Charitable Trust		Hugo Friend Nomination	\$	5,000.00
Friends of Rotoiti Trust		Hugo Friend Nomination	\$	5,000.00
G.I.F.T Centre		GIFT Centre - Purchase of Vans less Trade-Ins	\$	80,000.00
Gillies McIndoe Research Institute		Clinical Study of use of ACE Inhibitors to treat malignant Melanoma	\$	300,000.00
Gina (Georgina) Le Noel		Papakura High School Student Scholarship	\$	4,020.25
Glen Innes Foodbank (CAB)		Hugo Friend Nomination	\$	5,000.00
Graeme Dingle Foundation (NZ wide)		Run the Kiwi Can programme at Pukekohe North & Mercer schools	\$	50,000.00
Grief and Loss Support Services, Auckland		Seasons for Growth programme - Funding for Fieldworker	\$	25,000.00
Guardian Angels Charitable Trust		Hugo Friend Nomination	\$	2,500.00
Gutter Kitties		Hugo Friend Nomination	\$	5,000.00
Hand Up Foundation		Funding for 2 students from St Paul's College for a year	\$	3,000.00
Happiness House Queenstown		Hugo Friend Nomination	\$	2,500.00
Hihi Conservation (Recovery Group)		Leading the recovery of the Hihi species	\$	10,000.00
Home & Family Counselling		Fundraising Event	\$	5,000.00
Hope Rising Farm Trust		"Time out with Horses" programme in 2018	\$	4,100.00
I Have a Dream Charitable Trust		30 Children through the Trust's Ngātahi Education Initiative in Whāngārei	\$	30,000.00

Charity 	Purpose 	Donation
Inzone Education Foundation	12-Seater Van to transport InZone students	\$ 50,747.00
John Walker Find Your Field of Dreams Foundation	Support BLENNZ Sport for 1 Year	\$ 25,000.00
Ka Pai Kai South Waikato	Hugo Friend Nomination	\$ 2,500.00
Kākano Youth Arts Collective	Van purchase, sign writing & operating costs	\$ 17,700.00
KaraHands	Hugo Friend Nomination	\$ 2,000.00
Kawakawa (Bay of Islands) Hospital	Hugo Whānau House and Hugo Resuscitation Bays	\$ 200,000.00
Kenzie's Gift	Hugo Friend Nomination	\$ 2,500.00
Kerri Birdthistle	Kerri Birdthistle - "Support Kerri Through Her Cancer Battle" (Givealittle Page)	\$ 5,000.00
Key to Life Charitable Trust	Hugo Friend Nomination	\$ 2,500.00
Kids With Arthritis NZ	2018 Xmas Events in Auckland, Wellington & Christchurch	\$ 10,000.00
Kootuitui ki Papakura	Health Strand at Papakura High School & Homes Strand	\$ 150,000.00
Leehane Stowers	Leehane Stowers - "Life" (Givealittle Page)	\$ 5,000.00
Life Education - Rodney	Funding support for one of Life Education's existing Educators	\$ 20,000.00
Lincoln Rotary Trust	Hugo Friend Nomination	\$ 5,000.00
Lions Clubs New Zealand Child Mobility Foundation	Hugo Friend Nomination	\$ 5,000.00
Lizzie McKay	Lizzie McKay - Cystic Fibrosis / Diabetes Sensors Management	\$ 5,000.00
Make-A-Wish Foundation of New Zealand	Hugo Friend Nomination	\$ 2,500.00
Malaghan Institute of Medical Research	Hugo Friend Nomination	\$ 2,500.00
Māpura Studios	Stroke Art Therapy programme for 12 people and developing Māpura services in South Auckland	\$ 30,600.00

Charity 	Purpose 	Donation
Massive Co Trust	Hugo Friend Nomination	\$ 5,000.00
Meridee Walter	Meridee Walter - "Help Meridee fight the odds" (Givealittle Page)	\$ 5,000.00
MIXIT	Van purchase & sign writing	\$ 10,300.00
Mothers Helpers	Hugo Friend Nomination	\$ 2,500.00
Motor Neurone Disease Association of NZ	Hugo Friend Nomination	\$ 2,500.00
Movember Foundation	Hugo Friend Nomination	\$ 5,000.00
Mt Richmond Special School	Toyota Hiace Van c/w Rear Wheelchair Hoist	\$ 66,000.00
Multiple Sclerosis Society of Auckland Inc	Hugo Friend Nomination	\$ 5,000.00
Music Therapy New Zealand	Support of Music Therapy Week 2018 and Improved Communications Project	\$ 45,900.00
National Contemporary Art Award 2019	Hugo Friend Nomination	\$ 5,000.00
Nelson College for Girls	Hugo Friend Nomination	\$ 2,500.00
Nelson Environment Centre Inc	Hugo Friend Nomination	\$ 2,500.00
NeuroTones Waikato	Choir for people with neurological conditions in Hamilton	\$ 2,000.00
New Zealand Symphony Orchestra Foundation	Hugo Friend Nomination	\$ 5,000.00
No 4 Squadron Air Training Corps Support Committee	Sponsor two senior cadets to attend the Spirit of Adventure Trust Leadership Voyage	\$ 5,000.00
NZ Organisation for Rare Disorders	Hugo Friend Nomination	\$ 2,500.00
NZ Riding for the Disabled Association	Hugo Friend Nomination	\$ 1,500.00
Opawa School Board of Trustees	Hugo Friend Nomination	\$ 2,500.00
Orange Sky New Zealand Limited	Inaugural hybrid van in New Zealand	\$ 215,000.00

Charity 	Purpose 	Donation
Orphan Kids Charity	Hugo Friend Nomination	\$ 2,500.00
Outline New Zealand Inc	Hugo Friend Nomination	\$ 5,000.00
Paeroa Central School	Contribute to Kapa Haka marae camp trip in 2019	\$ 4,000.00
Panmure Bridge School	Panmure Bridge School - Sports Uniform	\$ 5,000.00
Papa Taiao - Earthcare Ltd	Hugo Friend Nomination	\$ 5,000.00
Papakura High School	Student Travel Costs	\$ 100.00
Parafed Wellington	Operating costs of Parafed's Youth Group programme	\$ 15,000.00
Pathway Trust, Christchurch	Navigate Initiative	\$ 45,000.00
Penguin Rescue	Hugo Friend Nomination	\$ 2,500.00
Pillars	Mentoring for 18 Children, 10 in Auckland & 8 in Christchurch	\$ 54,000.00
Poly-Emp Employment & Advisory Service	Hugo Friend Nomination	\$ 2,500.00
Project Jonah	Protection of Marine Mammals in NZ Waters	\$ 5,000.00
Rainbow Place (Waikato Hospice)	IPU and Respite Care services	\$ 50,000.00
RainbowYOUTH	Peer Support Services in South Island	\$ 20,000.00
RAW 2014 Limited	Reclaim Another Woman support programme	\$ 50,000.00
Recreate NZ	Hugo Friend Nomination	\$ 5,000.00
Riding for the Disabled - Cambridge Inc	Hugo Friend Nomination	\$ 2,000.00
Riding for the Disabled Assn - Sth Auckland	Hugo Friend Nomination	\$ 2,500.00
RNZSPCA Inc	2 x Hugo Friend Nominations	\$ 4,500.00
Rosmini College	College General fundraising	\$ 2,000.00
Royal Forest & Bird Protection Society	Hugo Friend Nomination	\$ 5,000.00

Charity 	Purpose 	Donation
Royal New Zealand Plunket Trust	2 x Hugo Friend Nominations	\$ 5,000.00
Sacred Heart College	Sistema recommended student scholarships - 1 x Day Boy (Alimaifiti Ono \$40k) and 1 x 7 Day Boarder (Esekia Taito \$100k)	\$ 143,000.00
Sarah Cato	Sarah Cato - "Purchase the Prejeta.....Please" (Givealittle Page)	\$ 5,000.00
Sea Mercy (Fiji)	Hugo Friend Nomination	\$ 5,000.00
Sir Peter Blake Marine Education and Recreation Board	Hugo Friend Nomination	\$ 2,500.00
Sir Peter Blake Trust	70 VR Headsets, educator backdrop & resources to be rolled out beginning of 2019 school year	\$ 40,000.00
South Auckland Christian Foodbank	Hugo Friend Nomination	\$ 2,500.00
Spinal Cord Injury Research Facility (University of Auckland)	Spinal Cord Injury Research	\$ 20,000.00
STaR Centre, University of Auckland	Pancreatic Cancer research	\$ 250,000.00
Stepping Stone Trust	Hugo Friend Nomination	\$ 5,000.00
Stevie Whittaker	Stevie Whittaker - "Stevie's brain tumour battle" (Givealittle Page)	\$ 5,000.00
Stop The Bus Charitable Trust	Hugo Friend Nomination	\$ 4,000.00
Stroke Foundation	Stroke Foundation's Pacific Stroke Prevention Project	\$ 20,000.00
Te Awamutu Catholic Women's League	Te Awamutu community support	\$ 10,000.00
Te Rangimarie Charitable Trust	Hugo Friend Nomination	\$ 5,000.00
Teach First NZ	Cost of 2 participants for 1 year & \$10,000 to support Teach First NZ's work with their alumni	\$ 50,000.00
The Aunties	2 x Hugo Friend Nominations	\$ 7,500.00

Charity 	Purpose 	Donation
Tōtara Park Riding for the Disabled Inc	Hugo Friend Nomination	\$ 5,000.00
University of Auckland School of Medicine Foundation	Hugo Friend Nomination	\$ 2,500.00
UpsideDowns Education Trust	Continue providing speech language therapy support and grow its outreach in the South Auckland community	\$ 40,000.00
Vincentian Home & Hospital	In memory of Marion Kitchenman RIP	\$ 10,000.00
Waikato Environment Centre Trust T/A Go Eco	Kaivolution Food Rescue	\$ 40,000.00
Waikato Junior Golfing Society	Hugo Friend Nomination	\$ 2,500.00
Wakatipu Wildlife Trust (Lake Hayes)	Wakatipu Wildlife Trust - Predator free programme on Lake Hayes track	\$ 4,000.00
Wakatipu Wildlife Trust (Arrowtown)	Hugo Friend Nomination	\$ 2,500.00
Wellington Hospitals Foundation	Hugo Friend Nomination	\$ 2,500.00
Whāngārei Hospital	Equipment (laser, trans perineal prostate biopsies, flexible cystoscope & urodynamic machines) for Urology Department	\$ 200,000.00
Who Did You Help Today Trust	Mothers Project & the Homework Help Club	\$ 50,000.00
Wildbase Recovery Community Trust	Hugo Friend Nomination	\$ 5,000.00
Will to Live	Hugo Friend Nomination	\$ 5,000.00
World Animal Protection Ltd	Hugo Friend Nomination	\$ 2,000.00
Youthline Auckland Charitable Trust	Hugo Friend Nomination	\$ 2,500.00
Total		\$ 3,500,487.49



The four bedroom Hugo House, which sleeps up to eight people, is located next to picturesque Lake Hayes in Arrowtown. Named in memory of Hugh Green, Hugo House was set up by Mark, Maryanne and Alice for the purpose of making it possible for people to have a holiday when they might find it difficult to do so otherwise. For example, the house is wheelchair accessible (except for the basement room) and two of the bedrooms have electrically adjusted care beds.

The Hugo House has also been fitted with a 'Monarch 200Kg' portable ceiling hoist system. In two of the bedrooms and the lounge there is a ceiling rail which the 'Monarch 200Kg' ceiling hoist can be used on. The bathroom has been fitted with a wall rail room covering system and a telescopic cubicle curtain rail system. There are also full body slings available for use in size small, medium and large. Finally, there is wheelchair ramp access to the house and outdoor decks. The deck has recently been renovated creating a beautiful area to view Lake Hayes.

The Hugo House works closely with the Hugo Charitable Trust and many of our referrals come from there.





Callum and Timmy Flett

The Flett family – Doug, Barb, Timmy and Callum – have enjoyed a couple of visits to the Hugo House.



James Swan (RIP)

Our heart-felt sympathy goes out to the Swan family who lost their son and brother, James, on 6 May 2018. James' Dad and brothers spent some time at the Hugo House in 2018.



Above: James and his mother, Nicola Swan.

Great Neighbours

Greg and Sara Ross live next door to the Hugo House and have been brilliant neighbours, often leaving freshly baked scones for guests and taking the rubbish bins out for collection. Greg and Sara also made a very generous, unsolicited donation of \$10,000 to contribute to Hugo's philanthropic work. This is the very first donation that Hugo has received and so Greg and Sara will always hold a special place in the history of the trust and the hearts of the Hugo team. Thank you both!



Above (from left): Sara Ross and her daughter Amanda Ross, Angeleah Chambers, Portia Chambers and Greg Ross.

Enquiries:

If you know someone who would benefit from a stay at the Hugo House, please contact Aoibheann Monaghan at aveen@hugocharitabletrust.nz



To listen to Hugh talk about the cattle sale, you can click on an audio link on page 61 or go to our website

The Hugo Trip to Donegal

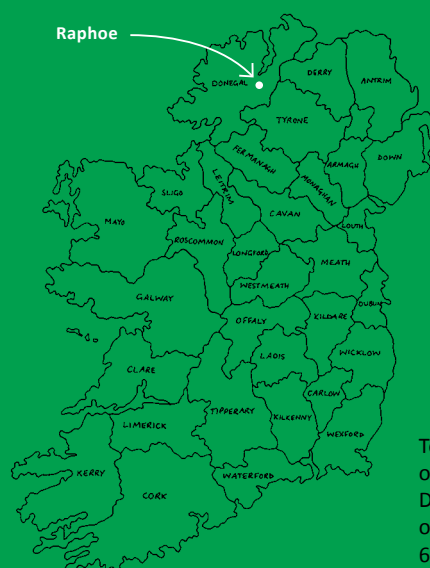
Hugh Green was born in Raphoe in County Donegal in 1931. Growing up in a family of eight children in a small town in rural Ireland there were no luxuries, but Hugh enjoyed his childhood in the close-knit Raphoe community. Hugh followed his father to the cattle mart at Raphoe every time there was a sale. It didn't take long before Hugh was buying his own cattle in the mornings, confident he could sell them again in the afternoon for a profit – Hugh seldom lost money.

To give everyone a feel for what inspired Hugh and contributed to his drive and passion to get things done, we all travelled to Ireland in July 2018 and visited County Donegal. This trip was undertaken at no cost to the Hugo Charitable Trust.

The Hugo tour group included Maryanne and Mark, Alice and her family, Hugo trustees, and Hugh's brother, John Green, and members of John's family. In Raphoe, the Hugo tour group was met by Mary Harte and representatives of the local Raphoe Community in Action at the Volt House Resource Centre. From there, we visited the former Green Family home, which also used to be the Central Hotel. We were then taken on a guided tour of Raphoe village and surrounds, culminating in a

candle light service in St Eunan's Catholic Church in Hugh's memory and a special visit to Hugh's grave.

As Maryanne explained during the group visit, *"Hugh loved Donegal but he had a special fondness for Raphoe, he just loved to meet the cattle dealers at the mart and drop in to see his many friends for a chat and a cup of tea. That was his perfect holiday above anywhere else in the world that he visited."*



To see some highlights of the Hugo trip to Donegal, you can click on a video link on page 62 or go to our website

The following Hugo Ireland Donations honour Hugh's legacy by giving something back to a place that Hugh loved just as much as New Zealand – County Donegal, Ireland.



Hugo Ireland Donations

The Hugo Ireland Donations were established by Maryanne, Mark and Alice as a separate source of funds to the Hugo Charitable Trust. However, the Hugo Ireland Donations are managed by the Hugo team in recognition of Hugo Charitable Trust's Irish/New Zealand connections.

Raphoe Gift

County Donegal



€100,000 was donated towards Raphoe community projects with the aim to make Raphoe a flagship Heritage Town of Donegal. The donation will be spent in consultation with local businesses, tourism stakeholders and community groups to help turn Raphoe into Donegal's flagship Heritage Town and attract visitors into the area. One of the first projects was the Christmas Lighting Event. The trees in the Raphoe diamond were originally planted at the end of WW1 to commemorate all local men who never returned home (Catholic and Protestant). This being the 100th anniversary of the end of World War I made the lighting of the trees particularly special.

Listen to
Hugh talk about
growing up in
Raphoe on page
61 or go to our
website



Speaking during Hugo Charitable Trust's visit to Raphoe in July 2018, Maryanne Green said it was an emotional day, filled with memories of her late father and his many visits to Raphoe. *"He loved Donegal but he had a special fondness for Raphoe,*

he just loved to meet the cattle dealers at the mart and drop in to see his many friends for a chat and a cup of tea ... We are keen to help with some Raphoe projects and give something back essentially from my father. There is a sense of old world charm here that could be enhanced to help attract visitors. Raphoe has so much history too, with the Beltany Stone Circle, the Castle and St. Eunan's Cathedral waiting to be explored."

Listen
to Mary Harte's
Highland Radio
interview on Hugo
on page 62 or go
to our website

Children in Crossfire

County Derry



We are in the process of making a €50,000 donation to Children in Crossfire tagged to education programmes in Tyrone and Donegal. The TIDAL education programme this year helped 800 teachers to teach compassion, empathy and reconciliation.



Pictured above: Richard Moore with Maryanne Green.

The Hugo team met Richard Moore, the founder of Children in Crossfire in July 2018. Richard has a powerful message of forgiveness to spread and this donation will help many more people hear his message and in turn hopefully make a change.

When Richard was on his way home from school at the age 10 years old he was blinded by a rubber bullet shot by a British Soldier during the troubles in Ireland. Richard showed no bitterness towards the soldier who shot him. He has dedicated his life to advocating for peace and enriching the lives of those in need.



Omagh

County Tyrone



Augher, in the north of Ireland, where Aoibheann Monaghan and her family grew up, is a small village with a population of around 400 people. Augher is 16 miles from Omagh, the County Town of Tyrone which has a population of just over 19,500. During The Troubles, on 15 August 1998, just three months after the signing of the Good Friday Agreement, 31 people were killed by a bomb in Omagh's town centre. The victims included Aoibheann's mother, Avril, her grandmother, Mary, her sister, Maura, and two unborn twin sisters.



The Hugo team at their visit to the Omagh Bomb memorial site in June 2018.

In June 2018, just before the 20th anniversary of this tragedy, the Hugo team visited the Omagh Bomb memorial site to pay our respects. The site has a reflection lake and a mirrored art work representing each of the victims. It is a peaceful place of remembrance.

We are in the process of making a donation of €60,000 in memory of Aoibheann's family and all those affected by the Omagh Bombing on 15 August 1998.

Little Angels School

Letterkenny, County Donegal



The Little Angels School in Letterkenny caters for students with moderate, severe and profound learning and physical disabilities including students with autism. It is a school that Hugh Green took a particular interest in and donated a playground designed for children with disabilities.



The Hugo team were lucky enough to experience Little Angels School's creative teaching environment during our visit to the school in July 2018. An €11,000 donation that was made in 2017 from the Hugo Ireland Donations went towards two interactive floor projectors (see above). It was evident on the visit that the Little Angels school is providing an extremely valuable service to the Donegal community, by focusing on their students' education and care, so they can become as independent as possible. A further €50,000 has since been donated through the Hugo Ireland Donations for a van to transport the children and their teachers.



Pictured above: Hugh's brother John Green and past school caretaker Hugo Shiels.



Owen McGirr

Raphoe, County Donegal



Owen McGirr is a 23-year-old with cerebral palsy. Owen decided from a young age that he would not allow his condition to stop him from living a fulfilling life. Owen has a degree in computer programming and has since created an app for people with disabilities or anyone who has difficulty communicating. Owen speaks using the app and he does this through his head movements. We were inspired by Owen's determination and donated €50,000 from the Hugo Ireland Donations to Owen for the development of his SayIT! communications app.



"Look, I do not know if this will be a success. I just know that it changed my life. When I go out I can hold a relatively fast paced conversation. I definitely have more confidence to talk to a total stranger because I know that most of them will understand how it works. I would like to do that for other people in a similar situation. I can say that I built what I needed. I use this app every day. Not because I built it, because it is a good app." (Owen McGirr)

Sammy and Tory Fund

Letterkenny, County Donegal



Hugh's cousin, Helen Johnston, tragically lost her 17-year old daughter Tory in 2015. Then very sadly in 2017 Helen's husband, Sammy, passed away. Helen and her daughter Amy set up the Sammy and Tory Fund in memory of their dear family members.

Pictured below (from left): Tory Johnston, Sammy and Helen Johnston



Pictured above: Helen and Amy Johnston.

Helen and Amy have done a fantastic job organising a series of local fundraisers. With Hugo's donation of €30,000, they have now raised over €67,000. Well done Helen and Amy!

Helen and Amy have chosen the Donegal Hospice, Letterkenny Oncology, and the Dublin Heart Unit to benefit directly from the Fund. We send Helen and Amy our prayers and good wishes - bail ó dhia ort agus ádh mór ort. Aroha nui from the Hugo team.

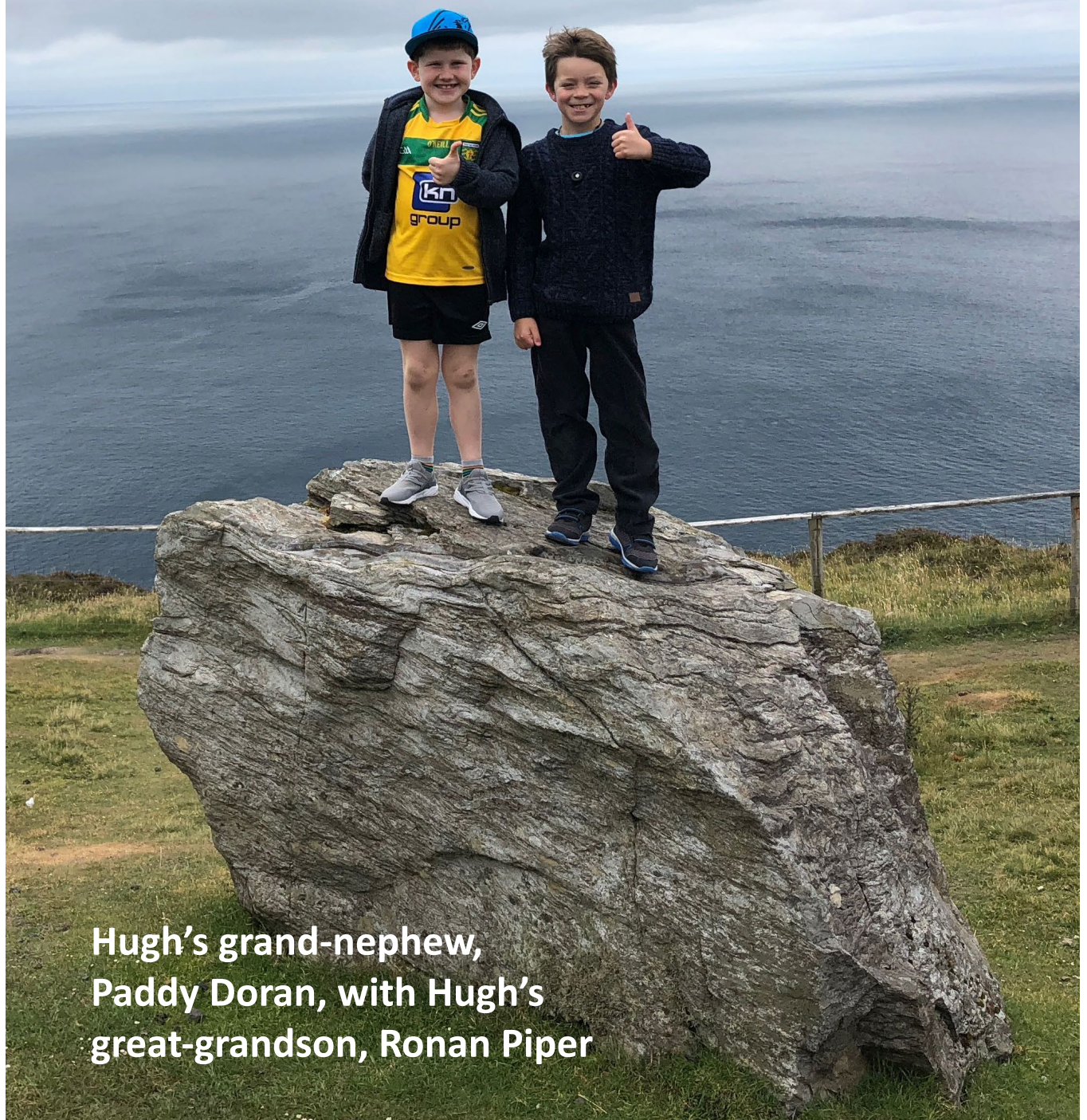
The Hugo Trip to Donegal 2018



Listen to Hugh's
Irish Blessing on
page 62 or go to
our website



Thumbs Up for Donegal



**Hugh's grand-nephew,
Paddy Doran, with Hugh's
great-grandson, Ronan Piper**

You can find many audio and video clips of Hugh on our website:
www.hugocharitabletrust.nz



Listen to Hugh's Life Story



Highland Radio
Honorary Doctorate of Law



Donegal Good Craic



Donegal Person of the Year



Hugh's Father



School Days



The Dunces



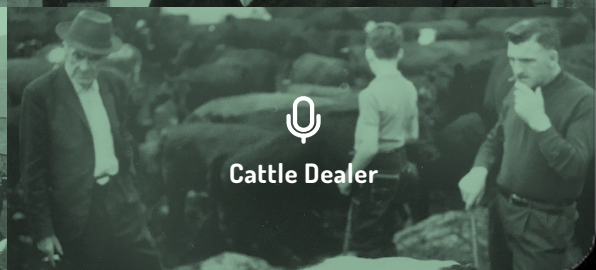
Central Hotel



Raphoe



Cattle Fair Days



Cattle Dealer

You can find many audio and video clips of Hugh on our website:
www.hugocharitabletrust.nz



Leaving Ireland for Scotland



Breaking Down the Ships



The Immigrants



Cattle Trading



Big Risks



Recipe for Success



Hugh Back to Raphoe



Rosaleen McGoldrick
Talks About Hugh



Marion Kitchenman
Speaking About Hugh



Irish Blessing



Watch Highlights of the
Hugo Trip to Donegal

Mary Harte Interview About
Hugh Green/Hugo

Street Art in Henderson



The Hugo team
visit Kākano



Financial Statements
for the year ended 31 March 2019
www.hugocharitabletrust.nz

Contents

Approval of Financial Statements	66
Directory	67
Statement of Comprehensive Revenue and Expense	69
Statement of Financial Position	70
Statement of Changes in Trust Funds	71
Statement of Cash Flows	72
Notes to the Financial Statements	73
Audit Report	80

Approval of Financial Statements

Financial Statements
for the year ended 31 March 2019

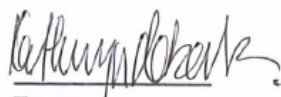
The Trustees are pleased to present the Financial Statements of Hugo Charitable Trust, as at and for the year ended 31 March 2019.



Trustee

16 April 2019

Date



Trustee

16 April 2019

Date

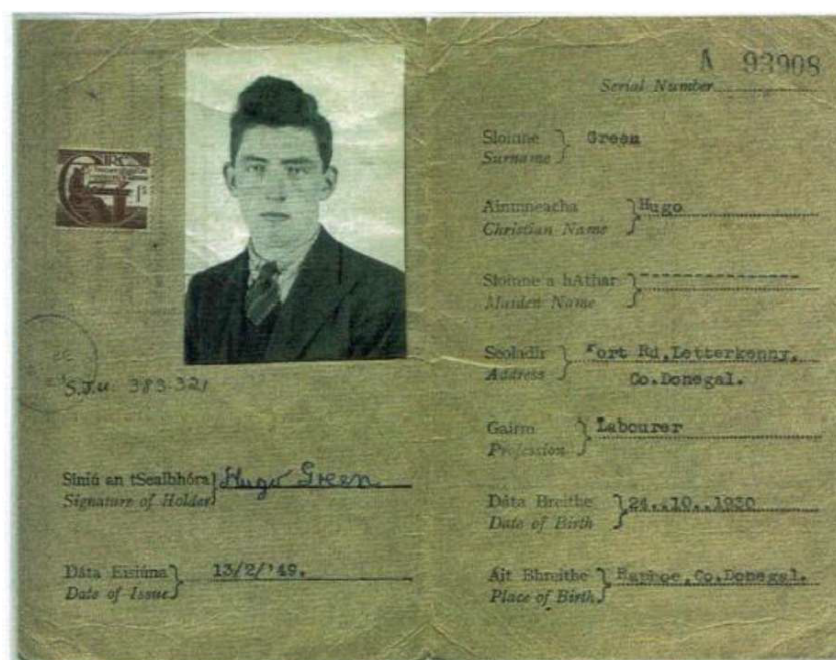
Directory

Nature of Entity Charitable Trust

Purpose

Maryanne Green as the Settlor established the Hugo Charitable Trust ("Hugo") to continue the legacy of helping others started by her father, Hugh Green.

Hugh Green, born in 1931 in County Donegal in Ireland, was the fifth of eight children. Hugh endured great hardship through his early life before moving to New Zealand as a young man where he worked hard and lived by strong Catholic values which he encouraged his children to follow. As he went on to earn business success, he set about establishing a pattern of philanthropic giving to those less fortunate than himself. Hugh's eldest daughter, Maryanne Green, established this Trust in his name to continue his generous giving and in his memory.



"My travel documents - note I had to "adjust" my age to be eligible"

Caption and image from:

Green, H. (2011). *Hugh Green: The Story of an Irish Emigrant Who Never Left Home*

Directory (continued)

Purpose (continued)	<p>Hugo is established for the following charitable purposes:</p> <ul style="list-style-type: none"> (a) the relief of poverty; (b) to advance education, health and other charitable purposes to support family, social and community welfare; (c) the care, support and assistance of those with physical or mental health care needs; (d) the support of religious groups which provide support and help to people in the community, particularly but not limited to Catholic groups such as (by way of example only) the Society of St Vincent de Paul in New Zealand, the Hospice and St Patricks' Cathedral; (e) the care, support and assistance of the disadvantaged or marginalised; (f) the furtherance of education and learning; (g) the support of teaching and social programmes, to benefit the economically disadvantaged, including music programmes having regard to the opportunities music offers to build self-esteem and encourage achievement; (h) the funding of medical research and medical care to improve health outcomes; (i) the support of charitable organisations that further the above purposes; and (j) any other purposes within New Zealand which are charitable according to the law of New Zealand.
Settlor & Founder	Maryanne Green
Trustees	<p>Mark Owens Kathryn Roberts Robert ("Bruce") Stewart Stephen Hunter</p>
Date of establishment	20 April 2017
Date of registration	4 May 2017
Registration number	CC54425
Location of business	<p>Tracy Island Level 3, General Buildings 29-33 Shortland Street Auckland 1143</p>
Website	www.hugocharitabletrust.nz
Auditors	<p>KPMG 18 Viaduct Harbour Avenue Auckland</p>

Statement of Comprehensive Revenue and Expense

for the year ended 31 March 2019
in New Zealand Dollars

	Note	2019 \$	2018 \$
Revenue			
Income distributions from the Hugh Green Family Trust - The Trustees are Maryanne Green, Mark Owens and Alice Watson	2	1,250,000	1,250,000
Interest Received		2,427,045	2,017,105
Donations Received		10,000	-
Total Revenue		3,687,045	3,267,105
Expenses			
Donations and Grant Expenses	3	(3,500,487)	(3,007,125)
Total Expenses		(3,500,487)	(3,007,125)
Operating Surplus for the Year		186,557	259,980
Other Revenue			
Distribution received from the Hugh Green Property Trust		-	75,000,000
Total Other Revenue		-	75,000,000
Net Surplus for the Year		186,557	75,259,980
Other Comprehensive Revenue and Expense			
		-	-
Total Comprehensive Revenue and Expense for the Year		186,557	75,259,980

Statement of Financial Position

as at 31 March 2019
in New Zealand Dollars

	Note	2019 \$	2018 \$
Assets			
Cash and Cash Equivalents		46,788	40,006
Receivables		399,849	20,074
Investment	5	75,000,000	75,200,000
Total Assets		75,446,637	75,260,080
Equity			
Accumulated Comprehensive Revenue and Expense		75,446,537	75,259,980
Trust Capital		100	100
Total Equity		75,446,637	75,260,080

Statement of Changes in Trust Funds

for the year ended 31 March 2019
in New Zealand Dollars

	Trust Capital	Accumulated Comprehensive Revenue and Expense	Total Equity
Opening Balance at 1 April 2018	100	75,259,980	75,260,080
Surplus for the Year		186,557	186,557
Closing Balance at 31 March 2019	100	75,446,537	75,446,637
Opening Balance at 1 April 2017	-	-	-
Surplus for the Year	-	75,259,980	75,259,980
Settlement Sum	100	-	100
Closing Balance at 31 March 2018	100	75,259,980	75,260,080

Statement of Cash Flows

for the year ended 31 March 2019
in New Zealand Dollars

	2019 \$	2018 \$
Cash flows from operating activities		
Distributions received	1,250,000	76,250,000
Donations made	(3,500,487)	(3,007,125)
Interest received	2,047,270	1,997,031
Donations Received	10,000	-
Net Cash flows from operating activities	(193,218)	75,239,906
Cash flows from investing activities		
Purchase of Investments	-	(75,200,000)
Sale of Investments	200,000	-
Net Cash flows from investing activities	200,000	(75,200,000)
Cash flows from financing activities		
Capital Contribution	-	100
Net Cash flows from financing activities	-	100
Net increase in cash held	6,782	40,006
Opening Cash and Cash Equivalents at the beginning of the year	40,006	-
Closing Cash and Cash Equivalents at the end of the year	46,788	40,006
Made up of:		
Bank Balances	46,788	40,006
Total Cash and Cash Equivalents	46,788	40,006

Notes to the Financial Statements

1. General Overview

a Reporting Entity

The financial statements presented are those for the Hugo Charitable Trust ("Hugo"). Hugo is established and domiciled in New Zealand and is a registered charity under the Charities Act 2005.

The purpose of Hugo is to continue the legacy of helping others started by Hugh Green.

The financial statements for Hugo are for the year ended 31 March 2019. The financial statements were authorised for issue by the Trustees.

b Basis of Preparation

The financial statements have been prepared in accordance with New Zealand Generally Accepted Accounting Practice (NZ GAAP). For the purposes of financial reporting they comply with PBE Accounting Standards Not-For-Profit and Tier 2 reduced disclosure concessions have been applied. As a registered charity, Hugo is required to prepare financial statements in accordance with NZ GAAP as specified in XRB A1.

Hugo has elected to report in accordance with PBE Accounting Standards Not-For-Profit Tier 2 on the basis that it does not have public accountability and has total annual expenses of less than \$30 million.

The financial statements are presented in New Zealand dollars (NZ\$) which is Hugo's functional currency and have been prepared on an accrual and historical cost basis.

The Statement of Financial Position is presented on a liquidity basis to provide the most relevant information to entitled users of these financial statements.

The statement of cash flows has been prepared using the direct method.

c Use of Estimates and Judgements

The preparation of the financial statements in conformity with PBE Accounting Standards Tier 2 requires management to make judgements, estimates and assumptions that affect the application of accounting policies and the reported amounts of assets, liabilities, income and expenditure.

There are no significant estimates used in the preparation of the financial statements.

d Taxes

Hugo is a registered charity under the Charities Act 2005 and has an income tax exemption on the grounds of charitable purpose under Section CW41 of the Income Tax Act 2007. Hugo is not registered for GST purposes and the financial statements are prepared on a GST inclusive basis.

Notes to the Financial Statements (continued)

e Cash and Cash Equivalents

Cash and cash equivalents comprise of cash at bank and term deposits with a maturity date of less than 90 days.

f Receivables

Non-trade receivables from exchange transactions comprise of accrued interest on term deposits and bank accounts.

g Revenue

i. *Distributions received*

Distributions received are recognised on receipt or when the economic flow can be reliably estimated as revenue in the statement of comprehensive revenue and expenses.

ii. *Interest income*

Interest income is earned on term investments. Interest income is recognised in the statement of comprehensive revenue and expense as it is earned. Interest income is accrued using the effective interest rate method. The effective interest rate exactly discounts estimated future cash receipts through the expected life of the financial asset to that asset's net carrying amount. The method applies this rate to the principal outstanding to determine interest revenue each period.

2. Related Parties

Key management personnel include the settlor and founder Maryanne Green and the four Trustees: Mark Owens, Kathryn Roberts, Robert Stewart and Stephen Hunter, who do not receive any remuneration from the Hugo Charitable Trust in the current year.

Income distribution of \$1,250,000 recognised in the Statement of Comprehensive Revenue and Expense is a distribution received from the Hugh Green Family Trust. The Trustees of the Hugh Green Family Trust are Maryanne Green, Mark Owens and Alice Watson.

The Hugo Charitable Trust is also very grateful for the external funding of operational expenses by Maryanne Green and Alice Watson from the distributions from the Hugh Green Family Trust. The Trustees of the Hugh Green Family Trust are Maryanne Green, Mark Owens and Alice Watson.

There are no related party balances owing at balance date.

Notes to the Financial Statements (continued)

3. Donations and Grant Expenses

Donations and grants are recognised as expenses once the donation or grant is approved by the Trustees of the Hugo Charitable Trust and committed to by both parties. These have been approved by the Trustees up until balance date. Donations and grants approved from the current year's net surplus have been recognised as an expense in the statement of comprehensive revenue and expense.

The donations paid during the year total \$3,500,487 and were made to the following organisations:

A Girl Called Hope	1,000
Abilities Group	5,000
Alan Duff Charitable Foundation	2,500
Argo Trust, Wellington	67,000
Arts for Health Community Trust	2,000
Auckland City Mission (Mission HomeGround)	250,000
Auckland Foundation (Sanitary Products in NZ Schools)	5,000
Auckland Medical Museum Trust	31,000
Auckland Rescue Helicopter Trust	1,000
Autism New Zealand	5,000
Baradene College of the Sacred Heart, Auckland (Scholarship)	50,000
Barnados, Hamilton	40,000
Baskets of Blessings	2,500
Bellyful, Hibiscus Coast	5,000
Bellyful NZ, Wellington	10,000
Big Buddy	5,000
Camp Quality New Zealand	20,000
Canteen	1,500
Caring Crew NZ	212
Catholic Social Services	2,500
CCS Disability Action Southland	2,500
Celtic Flute School of New Zealand Inc.	5,000
Christchurch Foundation	50,000
Christchurch Heart Institute Trust	5,000
Connect the Dots	50,000
Corey Keeling	5,000
Cystic Fibrosis NZ	2,500

Notes to the Financial Statements (continued)

3. Donations and Grant Expenses (continued)

Dance Therapy NZ	10,000
De Paul House	7,500
Dialysis Machine (Otago)	11,788
Diarmuid Barron	2,000
Dilworth School (Scholarships)	65,000
Eat My Lunch	4,000
EK (Eakalafi) Taeiloa	4,020
Federation of Islamic Associations of New Zealand (FIANZ)	50,000
First Foundation	5,000
Foster Hope Charitable Trust	10,000
Friends of Rotoiti Trust	5,000
Growth In Faith Together (GIFT) Centre	80,000
Gillies McIndoe Research Institute	300,000
Gina (Georgina) Le Noel	4,020
Glen Innes Foodbank	5,000
Graeme Dingle Foundation	50,000
Grief and Loss Support Services, Auckland	25,000
Guardian Angels Charitable Trust	2,500
Gutter Kitties	5,000
Hand Up Foundation (Scholarships)	3,000
Happiness House Queenstown	2,500
Hihi Conservation	10,000
Home and Family Counselling	5,000
Hope Rising Farm Charitable Trust	4,100
I Have a Dream Charitable Trust	30,000
InZone Education Foundation	50,747
John Walker Find Your Field of Dreams Foundation	25,000
Ka Pai Kai South Waikato	2,500
Kaivolution, Waikato Environment Centre Trust T/A Go Eco	40,000
Kākano Youth Arts Collective	17,700
KaraHands	2,000
Kawakawa (Bay of Islands) Hospital	200,000
Kenzie's Gift	2,500
Kerri Birdthistle	5,000
Key to Life Charitable Trust	2,500
Kids With Arthritis NZ	10,000

Notes to the Financial Statements (continued)

3. Donations and Grant Expenses (continued)

Leehane Stowers	5,000
Life Education Trust, Rodney District	20,000
Lincoln Rotary Trust	5,000
Lions Clubs New Zealand Child Mobility Foundation	5,000
Lizzie McKay	5,000
Make-A-Wish Foundation of New Zealand	2,500
Malaghan Institute of Medical Research	2,500
Māpura Studios	30,600
Massive Co Trust	5,000
Meridee Walter	5,000
Mixit	10,300
Mothers Helpers	2,500
Motor Neurone Disease Association of NZ	2,500
Movember Foundation	5,000
Mount Richmond School	66,000
Multiple Sclerosis Society of Auckland Inc	5,000
Music Therapy New Zealand (MThNZ)	45,900
National Contemporary Art Award 2019	5,000
Nelson College for Girls (Nelson Teen Parent Unit)	2,500
Nelson Environment Centre Inc (Nelson Kai Rescue)	2,500
NeuroTones Waikato	2,000
New Zealand Symphony Orchestra Foundation	5,000
No. 4 Squadron Air Training Corps Support Committee	5,000
NZ Organisation for Rare Disorders	2,500
NZ Riding for the Disabled Association	1,500
Opawa School Board of Trustees (Nature Agents programme)	2,500
Orange Sky New Zealand Limited	215,000
Orphan Kids Charity	2,500
Outline New Zealand Inc	5,000
Paeroa Central School	4,000
Panmure Bridge School	5,000
Papa Taiao - Earthcare Ltd	5,000
Papakura High School	100
Papakura Kootuitui Trust	150,000
Parafed Wellington	15,000
Pathway Trust, Christchurch	45,000
Penguin Rescue	2,500

Notes to the Financial Statements (continued)

3. Donations and Grant Expenses (continued)

Pillars	54,000
Poly-Emp Employment & Advisory Service	2,500
Project Jonah	5,000
Rainbow Place (Waikato Hospice)	50,000
RainbowYOUTH	20,000
RAW 2014 Limited	50,000
Recreate NZ	5,000
Riding for the Disabled - Cambridge Inc	2,000
Riding for the Disabled Assn - South Auckland	2,500
RNZSPCA Inc	4,500
Rosmini College	2,000
Royal Forest & Bird Protection Society	5,000
Royal New Zealand Plunket Trust	5,000
Sacred Heart College (Scholarships)	143,000
Sarah Cato	5,000
Sea Mercy (Fiji)	5,000
Sir Peter Blake Marine Education and Recreation Board	2,500
Sir Peter Blake Trust	40,000
South Auckland Christian Foodbank	2,500
Spinal Cord Injury Research Facility, University of Auckland	20,000
STaR Centre, University of Auckland	250,000
Stepping Stone Trust	5,000
Stevie Whittaker	5,000
Stop The Bus Charitable Trust	4,000
Stroke Foundation	20,000
Te Awamutu Catholic Women's League	10,000
Te Rangimarie Charitable Trust	5,000
Teach First NZ - Ako Mātātupu	50,000
The Aunties	7,500
Totara Park Riding for the Disabled Inc	5,000
University of Auckland School of Medicine Foundation (Dementia Research)	2,500
UpsideDowns Education Trust	40,000
Vincentian Home and Hospital	10,000
Waikato Junior Golfing Society	2,500

Notes to the Financial Statements (continued)

3. Donations and Grant Expenses (continued)

Wakatipu Wildlife Trust, Lake Hayes	4,000
Wakatipu Wildlife Trust, Arrowtown	2,500
Wellington Hospitals Foundation	2,500
Whāngārei Hospital	200,000
Who Did You Help Today Charitable Trust	50,000
Wildbase Recovery Community Trust	5,000
Will to Live	5,000
World Animal Protection Ltd	2,000
Youthline Auckland Charitable Trust	2,500

3,500,487

4. Operating Expenses

The Hugo Charitable Trust is very grateful for the external funding of operational expenses by Maryanne Green and Alice Watson from the distributions from the Hugh Green Family Trust. The Trustees of the Hugh Green Family Trust are Maryanne Green, Mark Owens and Alice Watson.

5. Investments

Investments consist of term deposits held at bank and are classified as held-to-maturity investments. They are initially measured at fair value plus any directly attributable transaction costs. Subsequent to initial recognition, they are measured at amortised cost using the effective interest method.

6. Contingencies and Commitments

There are no capital commitments or contingent liabilities at balance date.

7. Subsequent Events

There have been no events subsequent to balance date that would materially affect the information presented in the financial statements.



Independent Auditor's Report

To the Trustees, Settlor and Founder of the Hugo Charitable Trust

Report on the financial statements

Opinion

In our opinion, the accompanying financial statements of the Hugo Charitable Trust ("Hugo") on pages 69 to 79:

- i. present fairly in all material respects Hugo's financial position as at 31 March 2019 and its financial performance and cash flows for the year ended on that date; and
- ii. comply with Public Benefit Entity Standards Reduced Disclosure Regime (Not For Profit).

We have audited the accompanying financial statements which comprise:

- the statement of financial position as at 31 March 2019;
- the statements of comprehensive revenue and expense, changes in Trust funds and cash flows for the year then ended; and
- notes, including a summary of significant accounting policies and other explanatory information.



Basis for opinion

We conducted our audit in accordance with International Standards on Auditing (New Zealand) ('ISAs (NZ)'). We believe that the audit evidence we have obtained is sufficient and appropriate to provide a basis for our opinion.

We are independent of Hugo in accordance with Professional and Ethical Standard 1 (Revised) Code of Ethics for Assurance Practitioners issued by the New Zealand Auditing and Assurance Standards Board and the International Ethics Standards Board for Accountants' Code of Ethics for Professional Accountants (IESBA Code), and we have fulfilled our other ethical responsibilities in accordance with these requirements and the IESBA Code.

Our responsibilities under ISAs (NZ) are further described in the auditor's responsibilities for the audit of the financial statements section of our report.



Other matter

The Trustees, on behalf of Hugo, are responsible for the other information included in the entity's Financial Statements for the year ended 31 March 2019. Our opinion on the financial statements does not cover any other information and we do not express any form of assurance conclusion thereon.

In connection with our audit of the financial statements our responsibility is to read the other information and, in doing so, consider whether the other information is materially inconsistent with the financial statements or our knowledge obtained in the audit or otherwise appears materially misstated. If, based on the work we have performed, we conclude that there is a material misstatement of this other information, we are required to report that fact. We have nothing to report in this regard.



Use of this independent auditor's report

This independent auditor's report is made solely to the Trustees as a body. Our audit work has been undertaken so that we might state to the Trustees those matters we are required to state to them in the independent auditor's report and for no other purpose. To the fullest extent permitted by law, we do not accept or assume responsibility to anyone other than the Trustees as a body for our audit work, this independent auditor's report, or any of the opinions we have formed.



Responsibilities of the Trustees for the financial statements

The Trustees, on behalf of Hugo, are responsible for:

- the preparation and fair presentation of the financial statements in accordance with generally accepted accounting practice in New Zealand (being Public Benefit Entity Standards Reduced Disclosure Regime (Not For Profit));
- implementing necessary internal control to enable the preparation of a set of financial statements that is fairly presented and free from material misstatement, whether due to fraud or error; and
- assessing the ability to continue as a going concern. This includes disclosing, as applicable, matters related to going concern and using the going concern basis of accounting unless they either intend to liquidate or to cease operations, or have no realistic alternative but to do so.



Auditor's responsibilities for the audit of the financial statements

Our objective is:

- to obtain reasonable assurance about whether the financial statements as a whole are free from material misstatement, whether due to fraud or error; and
- to issue an independent auditor's report that includes our opinion.

Reasonable assurance is a high level of assurance, but is not a guarantee that an audit conducted in accordance with ISAs NZ will always detect a material misstatement when it exists.

Misstatements can arise from fraud or error. They are considered material if, individually or in the aggregate, they could reasonably be expected to influence the economic decisions of users taken on the basis of these financial statements.

A further description of our responsibilities for the audit of these financial statements is located at the External Reporting Board (XRB) website at:

<http://www.xrb.govt.nz/standards-for-assurance-practitioners/auditors-responsibilities/audit-report-8/>

This description forms part of our independent auditor's report.

KPMG
Auckland

16 April 2019

The Craic's Good

Hugh's brother, John Green, showing us how to make rope the old way



Contacts

JULIA HUNTER

Donations Manager

julia@hugocharitabletrust.nz

AOIBHEANN MONAGHAN

Donations Officer

aveen@hugocharitabletrust.nz

MARYANNE GREEN

Founder

maryanne@hugocharitabletrust.nz

+64 27 424 2503

Registration Number: CC54425

www.hugocharitabletrust.nz

+64 09 3200 787

Level 3, General Building
29-33 Shortland Street
Auckland 1143
New Zealand

PO Box 105-846
Auckland 1143
New Zealand

Donations

Hugo is in the fortunate position of having a large capital base. We use the investment returns from this to fund our donations. This means that Hugo does not have to raise money from the public. However, while we do not actively seek donations from the public, we have had some interest regarding donations to Hugo, so have provided the Hugo Charitable Trust's bank account:

03 – 0243 – 0012647 – 000

Hugo is a registered charity and any donation is therefore tax deductible. We will provide a receipt for any donations received and will ensure that those donations are put to the best possible use.

100% of donations received will go towards the charities and organisations we support and not towards the operating costs of Hugo.

